

NEURO PROTOCOLS

Standard	CTA/CTV	SPINE
<u>Face (Trauma)</u>	<u>Carotids and Circle of Willis</u>	<u>C-Spine</u>
<u>Face (Contrast)</u>	<u>Carotids</u>	<u>T-Spine</u>
<u>Helical Head Without</u>	<u>Circle of Willis</u>	<u>L-Spine</u>
<u>Helical Head With</u>	<u>CTV Head</u>	<u>T & L-Spine</u>
<u>Neuro-Surg Head</u>	<u>Perfusion</u>	
<u>Orbits Bone (Non-Contrast)</u>	<u>Multiphase Acute Stroke</u>	
<u>Orbits – Soft Tissue (Contrast)</u>		DUAL ENERGY
<u>Parathyroid</u>		<u>Spine – Bone Marrow</u>
<u>Pituitary</u>		<u>Spine – Hardware</u>
<u>Soft Tissue Neck With</u>		
<u>Soft Tissue Neck Without</u>		
<u>Stealth Head</u>		
<u>Stealth Sinuses</u>		
<u>Stereo Head</u>		
<u>Temporal Bones</u>		

CAROTIDS

REVISED: 3/4/22

INDICATION	CAROTID STENOSIS / DISSECTION
ORAL PREP	
SCAN	ARTERIAL PHASE NECK
RECON	<ul style="list-style-type: none"> • 0.6mm / 0.625mm AXIAL RECON – STANDARD ALGORITHM (CAROTIDS) • 0.6mm / 0.625mm AXIAL RECON – BONE ALGORITHM (C-SPINE)
REFORMAT	<ul style="list-style-type: none"> ▪ 4mm q 2mm MIP CORONAL AND SAGITTAL (CAROTIDS) ▪ 2mm CORONAL AND SAGITTAL (C-SPINE)
3D POST PROCESSING	<ul style="list-style-type: none"> 📌 CURVED ROTATIONS RT/LT CAROTID AND RT/LT VERTEBRAL 📌 MIP IMAGES ARCH, CAROTID BIFURCATIONS AND VERTEBRAL ORIGINS 📌 STENOSIS MEASUREMENTS (IF STENOSIS PRESENT)

IV SIZE	18g / RT AC	
IV CONTRAST	65cc OMNIPAQUE 350	
INJECTION RATE	5cc/SEC	
PT POSITION	SUPINE / HEAD FIRST / TABLETOP / NO PILLOW	
LANDMARK	GE	STERNAL NOTCH
	SIEMENS	BELOW AORTIC ARCH
BREATHING		
SCOUTS	AP AND LATERAL	

PARAMETER		CTA
START		CARINA
END		SELLA TURCICIA
DFOV		20
PREP GROUP	<u>GE</u>	MIROI / SMART PREP @ ARCH
	<u>SIEMENS FORCE</u>	SMART PREP @ ARCH
	<u>SIEMENS EDGE</u>	

64 SLICE – GE VCT

CAROTID

PARAMETER	SMART PREP*	CTA	
SCAN TYPE		HELICAL FULL	
ROTATION TIME		0.5 SEC	
THICKNESS		0.625	
PITCH		0.984:1	
SPEED		39.37	
INTERVAL		0.625	
GANTRY TILT			
SCAN FOV		LARGE BODY	
kVp		120	
mA	40	AUTO mA TO 700	
NOISE INDEX		14.14	
DOSE REDUCTION			
ASIR/MODE		0% / PLUS-E	
ALGORITHM		STD THN CAR	STANDARD
REFORMATS			COR MIP THK / SAG MIP THK
THICK/INCR.		Bone THN	0.625 q 0.625
ALGORITHM			BONE
REFORMATS			COR 2 Bone / SAG 2 Bone
ASIR/MODE			0% / PLUS-E

**Dynamic Transition*

Estimated CTDI	118.92
Estimated DLP	538.68

SIEMENS EDGE

CAROTID

PARAMETER	PREMONITORING/ SMART PREP		CAROTID ANGIO	
SCAN TYPE	FULL 0.28 SEC			
ROTATION TIME	1.14 SEC		0.28 SEC	
THICKNESS	10mm		0.6mm	
PITCH			1.2	
SPEED				
INTERVAL			0.6mm	
GANTRY TILT				
SCAN FOV				
kVp	100		CAREkV - ON	
mAs	23		CAREdose4D	
NOISE INDEX				
DOSE REDUCTION				
DFOV	200mm		200mm	
PREP GROUP	10 SEC		SMART PREP	
KERNEL		Br36	STD THN CAR	Br40
ADMIRE				3
THICK/INCR.			COR MIP THK	4.0 q 2.0
KERNEL				Br40
ADMIRE				3
THICK/INCR.			SAG MIP THK	4.0 q 2.0
KERNEL				Br40
ADMIRE				3

Estimated CTDI	
Estimated DLP	

SIEMENS EDGE
TBDE CTA CAROTID

PARAMETER	PREMONITORING/ SMART PREP		CAROTID	
SCAN TYPE	FULL 0.28 SEC			
ROTATION TIME	1.14 SEC		0.28 SEC	
THICKNESS	10mm		0.6mm	
PITCH			0.45	
SPEED				
INTERVAL			0.6mm	
GANTRY TILT				
SCAN FOV				
kVp	AuSn 120		AuSn 120	
mAs	68		CAREDose4D	
NOISE INDEX				
DOSE REDUCTION				
DFOV	200mm		200mm	
PREP GROUP	8 SEC		SMART PREP	
KERNEL		Br36	STD THN CAR	Br40
ADMIRE				3
THICK/INCR.			DE# PP STD THN CACO	1.0 q 0.7
KERNEL				Qv40
ADMIRE				
THICK/INCR.			COR MIP THK	4.0 q 2.0
KERNEL				Br40
ADMIRE				3
THICK/INCR.			SAG MIP THK	4.0 q 2.0
KERNEL				Br40
ADMIRE				3

Estimated CTDI	
Estimated DLP	

SIEMENS EDGE
CAROTID / C-SPINE

PARAMETER	PREMONITORING/ SMART PREP		CTA COW	
SCAN TYPE	FULL 0.28 SEC			
ROTATION TIME	1.14 SEC		0.28 SEC	
THICKNESS	10mm		0.6mm	
PITCH			1.2	
SPEED				
INTERVAL			0.6mm	
GANTRY TILT				
SCAN FOV				
kVp	100		CAREkV - ON	
mAs	23		CAREdose4D	
NOISE INDEX				
DOSE REDUCTION				
DFOV	200mm		200mm	
PREP GROUP	10 SEC		SMART PREP	
KERNEL		Br36		Br40
ADMIRE			STD THN CAR	3
THICK/INCR.				4.0 q 2.0
KERNEL			COR MIP THK	Br40
ADMIRE				3
THICK/INCR.				4.0 q 2.0
KERNEL			SAG MIP THK	Br40
ADMIRE				3
THICK/INCR.				0.6 q 0.6
KERNEL			Bone THN CSP	Br60
ADMIRE				3
THICK/INCR.				2.0 q 2.0
KERNEL			COR 2 Bone CSP	Br60
ADMIRE				3
THICK/INCR.				2.0 q 2.0
KERNEL			SAG 2 Bone CSP	Br60
ADMIRE				3

CAROTIDS

196(2) – SIEMENS FORCE

CAROTID

PARAMETER	PREMONITORING / SMART PREP		CAROTID	
SCAN TYPE	FULL			
ROTATION TIME	0.25 SEC		0.25 SEC	
THICKNESS	10.0mm		0.6mm	
PITCH			0.7	
SPEED				
INTERVAL	0.0mm		0.6mm	
GANTRY TILT				
SCAN FOV				
kVp	100		90 / Sn150	
mAs	23		CARE Dose4D	
NOISE INDEX				
DOSE REDUCTION				
DFOV	20		18	
PREP GROUP	8 SEC		SMART PREP	
KERNEL		Br36	STD THN	Br40
ADMIRE			CAR	3
THICK/INCR.			DE #PP	1.0 q 0.7
KERNEL			STD THN	Qr40
ADMIRE			CAR	3
THICK/INCR.			COR MIP	4.0 q 2.0
KERNEL			THK	Br40
ADMIRE				3
THICK/INCR.			SAG MIP	4.0 q 2.0
KERNEL			THK	Br40
ADMIRE				3

Estimated CTDI	35.02
Estimated DLP	

CAROTIDS

196(2) – SIEMENS FORCE
CAROTID / C-SPINE

PARAMETER	PREMONITORING / SMART PREP		CAROTID / C-SPINE	
SCAN TYPE	FULL			
ROTATION TIME	0.25 SEC		0.25 SEC	
THICKNESS	10.0mm		0.6mm	
PITCH			0.7	
SPEED				
INTERVAL	0.0mm		0.6mm	
GANTRY TILT				
SCAN FOV				
kVp	100		90 / Sn150	
mAs	23		CARE Dose4D	
NOISE INDEX				
DOSE REDUCTION				
DFOV	20		18	
PREP GROUP	8 SEC		SMART PREP	
KERNEL		Br36	STD	Br40
ADMIRE			THN	
			CAR	3
THICK/INCR.			DE #PP	1.0 q 0.7
KERNEL			STD	Qr40
ADMIRE			THN	
			CAR	3
THICK/INCR.				0.6 q 0.6
KERNEL			Bone	Br64
ADMIRE				3
THICK/INCR.			COR	4.0 q 2.0
KERNEL			MIP	Br40
ADMIRE			THK	3
THICK/INCR.				4.0 q 2.0
KERNEL			SAG	Br40
ADMIRE			MIP TH	3
THICK/INCR.				2.0 q 2.0
KERNEL			COR 2	Br64
ADMIRE			Bone	3
THICK/INCR.				2.0 q 2.0
KERNEL			SAG 2	Br64
			Bone	




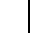
CAROTIDS

ADMIRE				3
THICK/INCR.			Curved AX Bone	2.0 q 2.0
KERNEL				Br64
ADMIRE				3

Estimated CTDI	35.02
Estimated DLP	

CAROTID AND CIRCLE OF WILLIS

REVISED: 3/4/22

INDICATION	ACUTE STROKE / DISSECTION
ORAL PREP	
SCAN	ARTERIAL PHASE HEAD AND NECK
RECON	<ul style="list-style-type: none"> • 0.6mm / 0.625mm AXIAL RECON – STANDARD ALGORITHM (HEAD AND NECK) • 0.625mm AXIAL RECON – STANDARD ALGORITHM (HEAD) – GE SCANNERS ONLY
REFORMAT	<ul style="list-style-type: none"> ▪ 2mm MIP CORONAL AND SAGITTAL (COW) ▪ 10mm q 5mm MIP AXIAL CORONAL AND SAGITTAL (COW) ▪ 4mm q 2mm MIP CORONAL AND SAGITTAL (CAROTID)
3D POST PROCESSING	<ul style="list-style-type: none">  CURVED ROTATIONS RT/LT CAROTID AND RT/LT VERTEBRAL  MIP IMAGES ARCH, CAROTID BIFURCATIONS AND VERTEBRAL ORIGINS  STENOSIS MEASUREMENTS (IF STENOSIS PRESENT)  3D ROTATIONS CIRCLE OF WILLIS

IV SIZE	18g / RT AC	
IV CONTRAST	65cc OMNIPAQUE 350	
INJECTION RATE	5cc/SEC	
PT POSITION	SUPINE / HEAD FIRST / TABLETOP / NO PILLOW	
LANDMARK	GE	STENRAL NOTCH
	SIEMENS	BELOW AORTIC ARCH
BREATHING		
SCOUTS	AP AND LATERAL	

PARAMETER	SCAN	
START	CARINA	
END	TOP OF HEAD	
DFOV	20	
PREP GROUP	<u>GE</u>	MIROI / SMART PREP @ ARCH
	<u>SIEMENS FORCE</u>	SMART PREP @ ARCH
	<u>SIEMENS</u>	
	<u>EDGE</u>	

64 SLICE – GE VCT

CAROTIDS AND CIRCLE OF WILLIS

PARAMETER	SMART PREP*	CTA	
SCAN TYPE		HELICAL FULL	
ROTATION TIME		0.5 SEC	
THICKNESS		0.625	
PITCH		0.984:1	
SPEED		39.37	
INTERVAL		0.625	
GANTRY TILT			
SCAN FOV		LARGE BODY	
kVp		120	
mA	40	AUTO mA TO 700	
NOISE INDEX		14.14	
DOSE REDUCTION			
ASiR/MODE		0% / PLUS-E	
ALGORITHM		STD THN CACO	STANDARD
REFORMATS			COR MIP THK / SAG MIP THK
THICK/INCR.		STD THN COW	0.625 q 0.625
ALGORITHM			STANDARD
REFORMATS			COR MIP THK COW / SAG MIP THK COW / AX MIP THK COW / COR MIP COW / SAG MIP COW
ASiR/MODE			0% / PLUS-E

**Dynamic Transition*

Estimated CTDI	118.92
Estimated DLP	538.68

196(2) – SIEMENS FORCE

CAROTID AND CIRCLE OF WILLIS

PARAMETER	PREMONITORING / SMART PREP		CACO	
SCAN TYPE	FULL			
ROTATION TIME	0.25 SEC		0.25 SEC	
THICKNESS	10.0mm		0.6mm	
PITCH			0.7	
SPEED				
INTERVAL	0.0mm		0.6mm	
GANTRY TILT				
SCAN FOV				
kVp	100		90 / Sn150	
mAs	23		CARE Dose4D	
NOISE INDEX				
DOSE REDUCTION				
DFOV	20		18	
PREP GROUP	8 SEC		SMART PREP	
KERNEL		Br36	STD THN CACO	Br40
ADMIRE				3
THICK/INCR. KERNEL			DE #PP STD THN CACO	1.0 q 0.7 Qr40
ADMIRE				3
THICK/INCR. KERNEL			AX MIP THK COW	10.0 q 5.0 Br40
ADMIRE				3
THICK/INCR. KERNEL			COR MIP THK COW	10.0 q 5.0 Br40
ADMIRE				3
THICK/INCR. KERNEL			SAG MIP THK COW	10.0 q 5.0 Br40
ADMIRE				3
THICK/INCR. KERNEL			COR MIP COW	2.0 q 2.0 Br40
ADMIRE				3
THICK/INCR. KERNEL				2.0 q 2.0 Br40
ADMIRE				

ADMIRE			SAG MIP COW	3
THICK/INCR.			COR MIP THK	4.0 q 2.0
KERNEL				Br40
ADMIRE				3
THICK/INCR.			SAG MIP THK	4.0 q 2.0
KERNEL				Br40
ADMIRE				3

Estimated CTDI	38.20
Estimated DLP	

196(2) – SIEMENS FORCE
HEAD/CAROTID/CIRCLE OF WILLIS

PARAMETER	HEAD		PREMONITORING / SMART PREP		CACO	
SCAN TYPE			FULL			
ROTATION TIME	1.0 SEC		1.13 SEC		0.25 SEC	
THICKNESS	5.0mm		10.0mm		0.6mm	
PITCH	0.55				0.7	
SPEED						
INTERVAL	5.0mm		0.0mm		0.6mm	
GANTRY TILT						
SCAN FOV						
kVp	CARE kV SEMI - 120		100		90 / Sn150	
mAs	CARE Dose4D		23		CARE Dose4D	
NOISE INDEX						
DOSE REDUCTION						
DFOV	20		20		18	
PREP GROUP			8 SEC		SMART PREP	
KERNEL	STD	Hr40		Br36	STD	Br40
ADMIRE		1			THN	3
THICK/INCR.	STD	1.0 q 1.0			DE	1.0 q 0.7
KERNEL		Hr40			#PP	Qr40
ADMIRE		1			STD	3
THICK/INCR.	Bone THN	1.0 q 1.0			AX	10.0 q 5.0
KERNEL		Hr64			MIP	Br40
ADMIRE		1			THK	3
THICK/INCR.	COR 3	3.0 q 3.0			COR	10.0 q 5.0
KERNEL		Hr40			MIP	Br40
ADMIRE		1			THK	3
THICK/INCR.	SAG 3	3.0 q 3.0			SAG	10.0 q 5.0
KERNEL		Hr40			MIP	Br40
ADMIRE		1			THK	3
THICK/INCR.					COR	2.0 q 2.0
KERNEL					MIP	Br40
ADMIRE					COW	3
THICK/INCR.						2.0 q 2.0
KERNEL						Br40

CAROTIDS AND CIRCLE OF WILLIS

ADMIRE					SAG MIP COW	3
THICK/INCR.					COR MIP THK	4.0 q 2.0
KERNEL						
ADMIRE						3
THICK/INCR.					SAG MIP THK	4.0 q 2.0
KERNEL						Br40
ADMIRE						3

Estimated CTDI	87.41
Estimated DLP	

SIEMENS EDGE

TBDE CTA COW CAROTID


PARAMETER	PREMONITORING/ SMART PREP		CACO	
SCAN TYPE	FULL 0.28 SEC			
ROTATION TIME	1.14 SEC		0.28 SEC	
THICKNESS	10mm		0.6mm	
PITCH			0.45	
SPEED				
INTERVAL			0.6mm	
GANTRY TILT				
SCAN FOV				
kVp	AuSn 120		AuSn 120	
mAs	68		CAREdose4D	
NOISE INDEX				
DOSE REDUCTION				
DFOV	200mm		200mm	
PREP GROUP	10 SEC		SMART PREP	
KERNEL		Br36	STD THN CACO	Br40
ADMIRE				3
THICK/INCR.			DE# PP STD THN CACO	1.0 q 0.7
KERNEL				Qv40
ADMIRE				
THICK/INCR.			AX MIP THK COW	10.0 q 5.0
KERNEL				Br40
ADMIRE				3
THICK/INCR.			COR MIP THK COW	10.0 q 5.0
KERNEL				Br40
ADMIRE				3
THICK/INCR.			SAG MIP THK COW	10.0 q 5.0
KERNEL				Br40
ADMIRE				3
THICK/INCR.			COR MIP COW	2.0 q 2.0
KERNEL				Br40
ADMIRE				3
THICK/INCR.			SAG MIP COW	2.0 q 2.0
KERNEL				Br40
ADMIRE				3
THICK/INCR.				4.0 q 2.0

KERNEL			COR MIP	Br40
ADMIRE			THK	3

Estimated CTDI	
Estimated DLP	

CIRCLE OF WILLIS

REVISED: 3/4/22

INDICATION	SAH / ANEURYSM / INTRACEREBRAL HEMORRHAGE
ORAL PREP	
SCAN	ARTERIAL PHASE HEAD
RECON	<ul style="list-style-type: none"> • 0.6mm / 0.625mm AXIAL RECONS – STANDARD ALGORITHM
REFORMAT	<ul style="list-style-type: none"> ▪ 2mm MIP CORONAL AND SAGITTAL ▪ 10mm q 5mm MIP AXIAL, CORONAL AND SAGITTAL
3D POST PROCESSING	 3D ROTATION CIRCLE OF WILLIS

IV SIZE	18g / RT AC	
IV CONTRAST	65cc OMNIPAQUE 350	
INJECTION RATE	5cc/SEC	
PT POSITION	SUPINE / HEAD FIRST	
LANDMARK	GE	OMBL
	SIEMENS	BELOW AORTIC ARCH
BREATHING		
SCOUTS	AP AND LATERAL	

PARAMETER	CTA	
START	C2	
END	TOP OF HEAD	
DFOV	20	
PREP GROUP	<u>GE</u>	MIROI / SMART PREP @ ARCH
	<u>SIEMENS FORCE</u>	SMART PREP @ ARCH
	<u>SIEMENS</u>	
	<u>EDGE</u>	

64 SLICE – GE VCT

CIRCLE OF WILLIS

PARAMETER	SMART PREP*	CTA	
SCAN TYPE		HELICAL FULL	
ROTATION TIME		0.6 SEC	
THICKNESS		0.625	
PITCH		0.969:1	
SPEED		19.37	
INTERVAL		0.625	
GANTRY TILT			
SCAN FOV		HEAD	
kVp		120	
mA	40	335	
NOISE INDEX			
DOSE REDUCTION			
ASIR/MODE		0% / PLUS-E	
ALGORITHM		STD THN COW	STANDARD
REFORMATS			COR MIP THK COW / SAG MIP THK COW / AX MIP THK COW / COR MIP COW / SAG MIP COW

**Dynamic Transition*

Estimated CTDI	285.87
Estimated DLP	715.15

196(2) – SIEMENS FORCE

CIRCLE OF WILLIS

PARAMETER	PREMONITORING /SMART PREP		CTA	
SCAN TYPE	FULL			
ROTATION TIME	0.25 SEC		0.25 SEC	
THICKNESS	10.0mm		0.6mm	
PITCH			0.7	
SPEED				
INTERVAL	0.0mm		0.6mm	
GANTRY TILT				
SCAN FOV				
kVp	100		90 / Sn150	
mAs	23		CARE Dose4D	
NOISE INDEX				
DOSE REDUCTION				
DFOV			18	
PREP GROUP	10 SEC		SMART PREP	
KERNEL		Br36	STD THN	Br40
ADMIRE			COW	3
THICK/INCR.			DE #PP	0.6 q 0.6
KERNEL			STD THN	Qr40
ADMIRE			COW	3
THICK/INCR.			AX MIP	10.0 q
KERNEL			THK	5.0
ADMIRE			COW	Br40
				3
THICK/INCR.			COR MIP	10.0 q
KERNEL			THK	5.0
ADMIRE			COW	Br40
				3
THICK/INCR.			SAG MIP	10.0 q
KERNEL			THK	5.0
ADMIRE			COW	Br40
				3
THICK/INCR.			SAG MIP	2.0 q 2.0
KERNEL			COW	Br40
ADMIRE				3
THICK/INCR.			COR MIP	2.0 q 2.0
KERNEL			COW	Br40

ADMIRE			3
---------------	--	--	----------

Estimated CTDI	89.35
Estimated DLP	

SIEMENS EDGE

TBDE CTA COW

PARAMETER	PREMONITORING/ SMART PREP		CTA COW	
SCAN TYPE	FULL 0.28 SEC			
ROTATION TIME	1.16 SEC		0.33 SEC	
THICKNESS	10mm		0.6mm	
PITCH			0.35	
SPEED				
INTERVAL			0.6mm	
GANTRY TILT				
SCAN FOV				
kVp	AuSn 120		AuSn 120	
mAs	68		CAREdDose4D	
NOISE INDEX				
DOSE REDUCTION				
DFOV	200mm		200mm	
PREP GROUP	8 SEC		SMART PREP	
KERNEL		Br36	STD THN COW	Br40
ADMIRE				3
THICK/INCR.			DE# PP STD THN CACO	1.0 q 0.7
KERNEL				Qv40
ADMIRE				
THICK/INCR.			AX MIP THK COW	10.0 q 5.0
KERNEL				Br40
ADMIRE				3
THICK/INCR.			COR MIP THK COW	10.0 q 5.0
KERNEL				Br40
ADMIRE				3
THICK/INCR.			SAG MIP THK COW	10.0 q 5.0
KERNEL				Br40
ADMIRE				3
THICK/INCR.			SAG MIP COW	2.0 q 2.0
KERNEL				Br40
ADMIRE				3
THICK/INCR.			COR MIP COW	2.0 q 2.0
KERNEL				Br40
ADMIRE				3

Estimated CTDI	
Estimated DLP	

C-SPINE

REVISED: 3/4/22

INDICATION	TRAUMA / TUMOR
ORAL PREP	
SCAN	NON-CONTRAST C-SPINE
RECON	<ul style="list-style-type: none"> • 0.6mm / 0.625mm AXIAL RECONS – BONE ALGORITHM • 0.6mm / 0.625mm AXIAL RECONS – STANDARD ALGORITHM
REFORMAT	<ul style="list-style-type: none"> ▪ 2mm CORONAL AND SAGITTAL
3D POST PROCESSING	NONE

IV SIZE		
IV CONTRAST		
INJECTION RATE		
PT POSITION		SUPINE / HEAD FIRST
LANDMARK	GE	STERNAL NOTCH
	SIEMENS	BELOW STERNAL NOTCH
BREATHING		
SCOUTS		AP AND LATERAL

PARAMETER		SCAN
START		ABOVE C1
END		T1
DFOV		14
PREP GROUP	<u>GE</u>	
	<u>SIEMENS FORCE</u>	
	<u>SIEMENS EDGE</u>	

64 SLICE – GE VCT

C-SPINE

PARAMETER	SCAN	
SCAN TYPE	HELICAL FULL	
ROTATION TIME	0.5 SEC	
THICKNESS	0.625	
PITCH	0.516:1	
SPEED	55.00	
INTERVAL	0.625	
GANTRY TILT		
SCAN FOV	SMALL BODY	
kVp	120	
mA	AUTO mA TO 500	
NOISE INDEX	21.21	
DOSE REDUCTION		
ASIR/MODE	0% / PLUS-E	
ALGORITHM	Bone THN	BONE+
REFORMATS		COR 2 Bone / SAG 2 Bone
THICK/INCR.	STD THN	0.625 q 0.625
ALGORITHM		STANDARD
REFORMATS		
ASiR/MODE		0% / PLUS
THICK/INCR.	STD	2.5 q 2.5
ALGORITHM		STANDARD
REFORMATS		
ASiR/MODE		0% / PLUS

Estimated CTDI	16.21
Estimated DLP	429.12

C-SPINE

196(2) – SIEMENS FORCE

C-SPINE

PARAMETER	C-SPINE	
SCAN TYPE		
ROTATION TIME	0.5 SEC	
THICKNESS	0.6mm	
PITCH	1.4	
SPEED		
INTERVAL	0.6mm	
GANTRY TILT		
SCAN FOV		
kVp	CARE kV – ON	
mAs	CARE Dose4D	
NOISE INDEX		
DOSE REDUCTION		
DFOV	18	
PREP GROUP		
KERNEL	Bone THN	Br64
ADMIRE		3
THICK/INCR.	STD THN	0.6 q 0.6
KERNEL		Br36
ADMIRE		3
THICK/INCR.	STD	2.0 q 2.0
KERNEL		Br36
ADMIRE		3
THICK/INCR.	COR 2 Bone	2.0 q 2.0
KERNEL		Br64
ADMIRE		3
THICK/INCR.	SAG 2 Bone	2.0 q 2.0
KERNEL		Br64
ADMIRE		3
THICK/INCR.	Curved AX Bone	2.0 q 2.0
KERNEL		Br64
ADMIRE		3

Estimated CTDI	12.92
Estimated DLP	

SIEMENS EDGE


C-SPINE

PARAMETER	C-SPINE	
SCAN TYPE		
ROTATION TIME	1.0 SEC	
THICKNESS	0.6mm	
PITCH	0.8	
SPEED		
INTERVAL	0.6mm	
GANTRY TILT		
SCAN FOV		
kVp	CAREkV – ON	
mAs	CAREdDose4D	
NOISE INDEX		
DOSE REDUCTION		
DFOV	120mm	
PREP GROUP		
KERNEL	Bone THN	Br60
ADMIRE		1
THICK/INCR.	STD THN	0.6 q 0.6
KERNEL		Br36
ADMIRE		1
THICK/INCR.	STD	2.0 q 2.0
KERNEL		Br36
ADMIRE		1
THICK/INCR.	COR 2 Bone	2.0 q 2.0
KERNEL		Br60
ADMIRE		1
THICK/INCR.	SAG 2 Bone	2.0 q 2.0
KERNEL		Br60
ADMIRE		1

Estimated CTDI	
Estimated DLP	

FACE (TRAUMA)

REVISED: 3/4/22

INDICATION	TRAUMA / FACE PAIN
ORAL PREP	
SCAN	1. NON-CONTRAST
RECON	<ul style="list-style-type: none"> • 0.6mm / 0.625mm / 1.25mm AXIAL RECON – BONE ALGORITHM • 0.6mm / 0.625mm / 1.25mm AXIAL RECON – STANDARD ALGORITHM
REFORMAT	<ul style="list-style-type: none"> ▪ 2mm CORONAL AND SAGITTAL (BONE ALGORITHM) ▪ 2mm CORONAL AND SAGITTAL (STANDARD ALGORITHM)
3D POST PROCESSING	 3D ROTATION (IF REQUESTED)

IV SIZE		
IV CONTRAST		
INJECTION RATE		
PT POSITION		SUPINE / HEAD FIRST
LANDMARK	GE	OMBL
	SIEMENS	BELOW MANDIBLE
BREATHING		
SCOUTS		AP AND LATERAL

PARAMETER		SCAN
START		BELOW MANDIBLE
END		ABOVE FRONTAL SINUSES
DFOV		18
PREP GROUP	<u>GE</u>	
	<u>SIEMENS FORCE</u>	
	<u>SIEMENS EDGE</u>	

64 SLICE – GE VCT

FACE WO

PARAMETER	SCAN	
SCAN TYPE	HELICAL FULL	
ROTATION TIME	0.5 SEC	
THICKNESS	0.625	
PITCH	0.531:1	
SPEED	10.62	
INTERVAL	0.625	
GANTRY TILT		
SCAN FOV	HEAD	
kVp	120	
mA	220	
NOISE INDEX		
DOSE REDUCTION		
ASIR/MODE	0% / FULL-E	
ALGORITHM	Bone THN	BONE
REFORMATS		COR 2 Bone / SAG 2 Bone
THICK/INCR.	STD THN	0.625 q 0.625
ALGORITHM		STANDARD
REFORMATS		COR 2 / SAG 2
ASIR/MODE		0% / PLUS-E

Estimated CTDI	38.40
Estimated DLP	465.63

FACE BONE

196(2) – SIEMENS FORCE

DE FACE WO

PARAMETER	DE FACE WO	
SCAN TYPE		
ROTATION TIME	0.5 SEC	
THICKNESS	0.6mm	
PITCH	0.8	
SPEED		
INTERVAL	0.6mm	
GANTRY TILT		
SCAN FOV		
kVp	100 / Sn150	
mAs	CARE Dose	
NOISE INDEX		
DOSE REDUCTION		
DFOV	12	
PREP GROUP		
KERNEL	Bone THN	Hr64
ADMIRE		3
THICK/INCR.	STD THN	0.6 q 0.6
KERNEL		Hr36
ADMIRE		3
THICK/INCR.	DE#PP STD THN	1.0 q 0.7
KERNEL		Br36
ADMIRE		3
THICK/INCR.	COR 2 Bone	2.0 q 2.0
KERNEL		Hr59
ADMIRE		3
THICK/INCR.	SAG 2 Bone	2.0 q 2.0
KERNEL		Hr59
ADMIRE		3
THICK/INCR.	COR 2	2.0 q 2.0
KERNEL		Hr36
ADMIRE		3
THICK/INCR.	SAG 2	2.0 q 2.0
KERNEL		Hr36
ADMIRE		3

FACE BONE

Estimated CTDI	12.55
Estimated DLP	

FACE BONE

196(2) – SIEMENS FORCE

DE FACE WITH METAL

PARAMETER	DE FACE HW	
SCAN TYPE		
ROTATION TIME	0.5 SEC	
THICKNESS	0.6mm	
PITCH	0.5	
SPEED		
INTERVAL	0.6mm	
GANTRY TILT		
SCAN FOV		
kVp	100 / Sn150	
mAs	CARE Dose	
NOISE INDEX		
DOSE REDUCTION		
DFOV	12	
PREP GROUP		
KERNEL	Bone THN	Hr64
ADMIRE		3
THICK/INCR.	STD THN	0.6 q 0.6
KERNEL		Hr36
ADMIRE		3
THICK/INCR.	DE#PP STD THN	1.0 q 0.7
KERNEL		Br36
ADMIRE		3
THICK/INCR.	COR 2 Bone	2.0 q 2.0
KERNEL		Hr59
ADMIRE		3
THICK/INCR.	SAG 2 Bone	2.0 q 2.0
KERNEL		Hr59
ADMIRE		3

Estimated CTDI	12.55
Estimated DLP	

FACE BONE

SIEMENS EDGE

FACE WO

PARAMETER	FACE	
SCAN TYPE		
ROTATION TIME	1.0 SEC	
THICKNESS	0.6mm	
PITCH	0.8	
SPEED		
INTERVAL	0.6mm	
GANTRY TILT		
SCAN FOV		
kVp	CAREkV – SEMI - 120	
mAs	CAREdDose4D	
NOISE INDEX		
DOSE REDUCTION		
DFOV	150mm	
PREP GROUP		
KERNEL	Bone THN	Hr60
ADMIRE		3
THICK/INCR.	STD THN	0.6 q 0.6
KERNEL		Hr38
ADMIRE		3
THICK/INCR.	COR 2 Bone	2.0 q 2.0
KERNEL		Hr60
ADMIRE		3
THICK/INCR.	SAG 2 Bone	2.0 q 2.0
KERNEL		Hr60
ADMIRE		3
THICK/INCR.	COR 2	2.0 q 2.0
KERNEL		Hr38
ADMIRE		3
THICK/INCR.	SAG 2	2.0 q 2.0
KERNEL		Hr38
ADMIRE		3

FACE BONE

Estimated CTDI	
Estimated DLP	

FACE BONE

FACE (CONTRAST)

REVISED: 3/4/22

INDICATION	FACE PAIN / INFECTION
ORAL PREP	
SCAN	I+ SCAN AFTER DUAL INJECTION (5 MINS AND 45 SEC BEFORE SCAN)
RECON	<ul style="list-style-type: none"> • 1.25mm AXIAL RECONS – STANDARD ALGORITHM • 0.6mm / 0.625mm / 1.25mm AXIAL RECONS – STANDARD ALGORITHM • 0.6mm / 0.625mm / 1.25mm AXIAL RECONS – BONE ALGORITHM
REFORMAT	<ul style="list-style-type: none"> ▪ 2mm CORONAL AND SAGITTAL (BONE ALGORITHM) ▪ 2mm CORONAL AND SAGITTAL (STANDARD ALGORITHM)
3D POST PROCESSING	NONE

IV SIZE		
IV CONTRAST		110cc OMNIPAQUE 350
INJECTION RATE		
PT POSITION		SUPINE / HEAD FIRST
LANDMARK	GE	OMBL
	SIEMENS	BELOW MANDIBLE
BREATHING		
SCOUTS		AP AND LATERAL

PARAMETER		SCAN
START		BELOW MANDIBLE
END		ABOVE FRONTAL SINUSES
DFOV		18
PREP GROUP	<u>GE</u>	45 SEC
	<u>SIEMENS FORCE</u>	45 SEC
	<u>SIEMENS</u>	
	<u>EDGE</u>	

*DUAL INJECTION: Use 110cc Omnipaque, inject 60cc, wait 5 minutes, give remaining 50cc at 45 sec delay.

64 SLICE – GE VCT

FACE W/

PARAMETER	SCAN	
SCAN TYPE	HELICAL FULL	
ROTATION TIME	0.5 SEC	
THICKNESS	1.25	
PITCH	0.531:1	
SPEED	10.62	
INTERVAL	1.25	
GANTRY TILT		
SCAN FOV	HEAD	
kVp	120	
mA	235	
NOISE INDEX		
DOSE REDUCTION		
ASIR/MODE	0% / PLUS-E	
ALGORITHM	STD With	STANDARD
REFORMATS		
THICK/INCR.	Bone THN With	0.625 q 0.625
ALGORITHM		BONE
REFORMATS		COR 2 Bone With / SAG 2 Bone With
ASIR/MODE		0% / FULL-E
THICK/INCR.	STD THN With	0.625 q 0.625
ALGORITHM		STANDARD
REFORMATS		COR 2 With / SAG 2 With
ASIR/MODE		0% / PLUS

Estimated CTDI	41.02
Estimated DLP	498.69

FACE ST

196(2) – SIEMENS FORCE

FACE W/

PARAMETER	FACE WITH	
SCAN TYPE		
ROTATION TIME	0.5 SEC	
THICKNESS	0.6mm	
PITCH	0.5	
SPEED		
INTERVAL	0.6mm	
GANTRY TILT		
SCAN FOV		
kVp	100 / Sn150	
mAs	CARE Dose	
NOISE INDEX		
DOSE REDUCTION		
DFOV	12	
KERNEL	Bone THN With	Hr64
ADMIRE		3
THICK/INCR.	STD THN With	0.6 q 0.6
KERNEL		Hr36
ADMIRE		3
THICK/INCR.	DE #PP STD THN With	1.0 q 0.7
KERNEL		Br36
ADMIRE		3
THICK/INCR.	COR 2 Bone With	2.0 q 2.0
KERNEL		Hr59
ADMIRE		3
THICK/INCR.	SAG 2 Bone With	2.0 q 2.0
KERNEL		Hr59
ADMIRE		3
THICK/INCR.	COR 2 With	2.0 q 2.0
KERNEL		Hr36
ADMIRE		3
THICK/INCR.	SAG 2 With	2.0 q 2.0
KERNEL		Hr36
ADMIRE		3

FACE ST

Estimated CTDI	12.55
Estimated DLP	

FACE W/O AND W/

PARAMETER	W/O		W/	
SCAN TYPE				
ROTATION TIME	0.5 SEC		0.5 SEC	
THICKNESS	0.6mm		0.6mm	
PITCH	0.5		0.5	
SPEED				
INTERVAL	0.6mm		0.6mm	
GANTRY TILT				
SCAN FOV				
kVp	100 / Sn150		100 / Sn150	
mAs	CARE Dose		CARE Dose	
NOISE INDEX				
DOSE REDUCTION				
DFOV	12		12	
KERNEL	Bone THN WO	Hr64	Bone THN With	Hr64
ADMIRE		3		3
THICK/INCR.		0.6 q 0.6		0.6 q 0.6
KERNEL	STD THN WO	Hr36	STD THN With	Hr36
ADMIRE		3		3
THICK/INCR.		1.0 q 0.7		1.0 q 0.7
KERNEL	DE #PP STD THN WO	Br36	DE #PP STD THN With	Br36
ADMIRE		3		3
THICK/INCR.		2.0 q 2.0		2.0 q 2.0
KERNEL	COR 2 Bone WO	Hr59	COR 2 Bone With	Hr59
ADMIRE		3		3
THICK/INCR.		2.0 q 2.0		2.0 q 2.0
KERNEL	SAG 2 Bone WO	Hr59	SAG 2 Bone With	Hr59
ADMIRE		3		3
THICK/INCR.		2.0 q 2.0		2.0 q 2.0
KERNEL	COR 2 STD WO	Hr36	COR 2 With	Hr36
ADMIRE		3		3

FACE ST

THICK/INCR.	SAG 2 STD WO	2.0 q 2.0	SAG 2 With	2.0 q 2.0
KERNEL		Hr36		Hr36
ADMIRE		3		3

Estimated CTDI	25.10
Estimated DLP	

SIEMENS EDGE

FACE W/

PARAMETER	FACE	
SCAN TYPE		
ROTATION TIME	1.0 SEC	
THICKNESS	0.6mm	
PITCH	0.8	
SPEED		
INTERVAL	0.6mm	
GANTRY TILT		
SCAN FOV		
kVp	CAREkV – SEMI - 120	
mAs	CAREdDose4D	
NOISE INDEX		
DOSE REDUCTION		
DFOV	180mm	
PREP GROUP	45 SEC	
KERNEL	Bone THN	Hr60
ADMIRE	With	3
THICK/INCR.	STD THN With	0.6 q 0.6
KERNEL		Hr38
ADMIRE		3
THICK/INCR.	COR 2 Bone With	2.0 q 2.0
KERNEL		Hr60
ADMIRE		3
THICK/INCR.	SAG 2 Bone With	2.0 q 2.0
KERNEL		Hr60
ADMIRE		3
THICK/INCR.	COR 2 With	2.0 q 2.0
KERNEL		Hr38
ADMIRE		3
THICK/INCR.	SAG 2 With	2.0 q 2.0
KERNEL		Hr38
ADMIRE		3
THICK/INCR.	STD With	1.5 q 1.5
KERNEL		Hr38
ADMIRE		3

FACE ST

Estimated CTDI	
Estimated DLP	

CTV HEAD

REVISED: 3/4/22

INDICATION	SINUS THROMBOSIS
ORAL PREP	
SCAN	I+ SCAN 35 SECONDS AFTER INJECTION
RECON	<ul style="list-style-type: none"> • 2.0mm AXIAL RECONS – STANDARD ALGORITHM • 0.6mm / 0.625mm / 1.25mm AXIAL RECONS – STANDARD ALGORITHM
REFORMAT	<ul style="list-style-type: none"> ▪ 2mm MIP CORONAL AND SAGITTAL ▪ 10mm q 5mm MIP AXIAL, CORONAL AND SAGITTAL
3D POST PROCESSING	NONE

IV SIZE	18g OR 20g	
IV CONTRAST	65cc OMNIPAQUE 350	
INJECTION RATE	4-5cc/SEC	
PT POSITION	SUPINE / HEAD FIRST	
LANDMARK	GE	OMBL
	SIEMENS	C4
BREATHING		
SCOUTS	AP AND LATERAL	

PARAMETER		SCAN
START		TOP OF HEAD
END		C2
DFOV		22
PREP GROUP	<u>GE</u>	45 SEC
	<u>SIEMENS FORCE</u>	35 SEC
	<u>SIEMENS EDGE</u>	

64 SLICE – GE VCT

CTV HEAD

PARAMETER	SCAN	
SCAN TYPE	HELICAL FULL	
ROTATION TIME	0.6 SEC	
THICKNESS	0.625	
PITCH	0.969:1	
SPEED	19.37	
INTERVAL	0.625	
GANTRY TILT		
SCAN FOV	HEAD	
kVp	120	
mA	335	
NOISE INDEX		
DOSE REDUCTION		
ASIR/MODE	0% / PLUS-E	
ALGORITHM	STD THN CTV	STANDARD
REFORMATS		AX MIP THK CTV / COR MIP THK CTV / SAG MIP THK CTV / COR MIP CTV / SAG MIP CTV

Estimated CTDI	38.86
Estimated DLP	671.23

CTV HEAD

196(2) – SIEMENS FORCE

CTV HEAD

PARAMETER	CTV	
SCAN TYPE		
ROTATION TIME	0.5 SEC	
THICKNESS	0.6mm	
PITCH	0.55	
SPEED		
INTERVAL	0.6mm	
GANTRY TILT		
SCAN FOV		
kVp	CARE kV – SEMI - 120	
mAs	CARE Dose4D	
NOISE INDEX		
DOSE REDUCTION		
DFOV	20	
PREP GROUP	35 SEC	
KERNEL	STD	Hr40
ADMIRE	THN	1
THICK/INCR.	CTV	10.0 q 5.0
KERNEL	AX	Hr40
ADMIRE	MIP	1
THICK/INCR.	THK	2.0 q 2.0
KERNEL	COR	Hr40
ADMIRE	MIP	1
THICK/INCR.	CTV	2.0 q 2.0
KERNEL	SAG	Hr40
ADMIRE	MIP	1
THICK/INCR.	CTV	10.0 q 5.0
KERNEL	COR	Hr40
ADMIRE	MIP	1
THICK/INCR.	THK	10.0 q 5.0
KERNEL	SAG	Hr40
ADMIRE	MIP	1
	THK	
	CTV	

Estimated CTDI	50.01
Estimated DLP	

CTV HEAD

SIEMENS EDGE

TBDE CTV HEAD

PARAMETER	TB_CTV_HEAD	
SCAN TYPE		
ROTATION TIME	0.5 SEC	
THICKNESS	0.6mm	
PITCH	0.35	
SPEED		
INTERVAL	0.6mm	
GANTRY TILT		
SCAN FOV		
kVp	AuSn 120	
mAs	CAREdDose4D	
NOISE INDEX		
DOSE REDUCTION		
DFOV	200mm	
PREP GROUP	35 SEC	
KERNEL	STD THN CTV	Hr40
ADMIRE		1
THICK/INCR.	DE# PP STD THN	1.0 q 0.7
KERNEL		Qv40
ADMIRE		
THICK/INCR.	AX MIP THK CTV	10.0 q 5.0
KERNEL		Hr40
ADMIRE		1
THICK/INCR.	COR MIP CTV	2.0 q 2.0
KERNEL		Hr40
ADMIRE		1
THICK/INCR.	SAG MIP CTV	2.0 q 2.0
KERNEL		Hr40
ADMIRE		1
THICK/INCR.	COR MIP THK CTV	10.0 q 5.0
KERNEL		Hr40
ADMIRE		1
THICK/INCR.	SA MIP THK CTV	10.0 q 5.0
KERNEL		Hr40
ADMIRE		1

CTV HEAD

Estimated CTDI	
Estimated DLP	

HELICAL HEAD WITH

REVISED: 3/4/2022

INDICATION	ABSCESS / METS
ORAL PREP	
SCAN	I+ HEAD 5 MINS (ABSCESS) OR 10 MINS (METS)
RECON	<ul style="list-style-type: none"> • 5.0mm AXIAL RECON – STANDARD ALGORITHM • 1.25mm AXIAL RECON – SOFT / STANDARD ALGORITHM • 1.25mm AXIAL RECON – BONE ALGORITHM
REFORMAT	<ul style="list-style-type: none"> ▪ 3mm CORONAL AND SAGITTAL
3D POST PROCESSING	NONE

IV SIZE		
IV CONTRAST		110CC OMNIPAQUE 350
INJECTION RATE		
PT POSITION		SUPINE / HEAD FIRST
LANDMARK	GE	OMBL
	SIEMENS	BELOW BASE OF SKULL
BREATHING		
SCOUTS		LATERAL

PARAMETER		SCAN
START		BASE OF SKULL
END		TOP OF HEAD
DFOV		22
PREP GROUP	<u>GE</u>	5 OR 10 MIN
	SIEMENS FORCE	5 OR 10 MIN
	<u>SIEMENS EDGE</u>	

HELICAL HEAD WITH

64 SLICE – GE VCT

HEAD WITH

PARAMETER	SCAN	
SCAN TYPE	HELICAL FULL	
ROTATION TIME	0.5 SEC	
THICKNESS	5.0	
PITCH	0.531:1	
SPEED	10.62	
INTERVAL	5.0	
GANTRY TILT		
SCAN FOV	HEAD	
kVp	120	
mA	AUTO mA to 450	
NOISE INDEX	3.50	
DOSE REDUCTION		
ASIR/MODE	90% / PLUS	
ALGORITHM	STD With	STANDARD
REFORMATS		
THICK/INCR.	STD THN With	1.25 q 0.625
ALGORITHM		SOFT
REFORMATS		COR 3 With / SAG 3 With
ASIR/MODE		90% / PLUS-E
THICK/INCR.	Bone With	2.5 q 2.5
ALGORITHM		BONE
REFORMATS		
ASIR/MODE		0% / FULL

Estimated CTDI	31.68
Estimated DLP	506.99

HELICAL HEAD WITH

SIEMENS EDGE

HEAD WITH

PARAMETER	HEAD	
SCAN TYPE		
ROTATION TIME	1.0 SEC	
THICKNESS	5.0mm	
PITCH	0.55	
SPEED		
INTERVAL	5.0mm	
GANTRY TILT		
SCAN FOV		
kVp	CAREKV - ON	
mAs	CAREdose4D	
NOISE INDEX		
DOSE REDUCTION		
DFOV	215mm	
PREP GROUP	5-10 MIN	
KERNEL	STD With	Hr40
ADMIRE		1
THICK/INCR.	STD THN With	1.0 q 1.0
KERNEL		Hr40
ADMIRE		1
THICK/INCR.	Bone THN With	1.0 q 1.0
KERNEL		Hr60
ADMIRE		1
THICK/INCR.	COR 3 With	3.0 q 3.0
KERNEL		Hr40
ADMIRE		1
THICK/INCR.	SAG 3 With	3.0 q 3.0
KERNEL		Hr40
ADMIRE		1

Estimated CTDI	
Estimated DLP	

HELICAL HEAD WITH

HELICAL HEAD WITHOUT

REVISED: 3/4/22

INDICATION	HEADACHE / CONFUSION
ORAL PREP	
SCAN	NON-CONTRAST HEAD
RECON	<ul style="list-style-type: none"> • 5.0mm AXIAL RECON – STANDARD ALGORITHM • 1.0mm / 1.25mm AXIAL RECON – SOFT / STANDARD ALGORITHM • 1.0mm / 1.25mm AXIAL RECON – BONE ALGORITHM
REFORMAT	<ul style="list-style-type: none"> ▪ 3mm CORONAL AND SAGITTAL
3D POST PROCESSING	NONE

IV SIZE		
IV CONTRAST		
INJECTION RATE		
PT POSITION		SUPINE / HEAD FIRST
LANDMARK	GE	OMBL
	SIEMENS	BELOW BASE OF SKULL
BREATHING		
SCOUTS		LATERAL

PARAMETER		SCAN
START		BASE OF SKULL
END		TOP OF HEAD
DFOV		22
PREP GROUP	<u>GE</u>	
	<u>SIEMENS FORCE</u>	
	<u>SIEMENS EDGE</u>	

64 SLICE – GE VCT

HEAD

PARAMETER	SCAN	
SCAN TYPE	HELICAL FULL	
ROTATION TIME	0.5 SEC	
THICKNESS	5.0	
PITCH	0.531:1	
SPEED	10.62	
INTERVAL	5.0	
GANTRY TILT		
SCAN FOV	HEAD	
kVp	120	
mA	AUTO mA to 450	
NOISE INDEX	3.50	
DOSE REDUCTION		
ASIR/MODE	40% / PLUS	
ALGORITHM	STD	STANDARD
REFORMATS		
THICK/INCR.	Soft THN	1.25 q 0.625
ALGORITHM		SOFT
REFORMATS		COR 3 / SAG 3
ASIR/MODE		90% / PLUS-E
THICK/INCR.	Bone THN	1.25 q 0.625
ALGORITHM		BONE
REFORMATS		
ASIR/MODE		0% / FULL

Estimated CTDI	31.68
Estimated DLP	506.99

HELICAL HEAD WITHOUT

196(2) – SIEMENS FORCE

HEAD

PARAMETER	HEAD	
SCAN TYPE		
ROTATION TIME	1.0 SEC	
THICKNESS	5.0mm	
PITCH	0.55	
SPEED		
INTERVAL	5.0mm	
GANTRY TILT		
SCAN FOV		
kVp	CARE kV – SEMI - 120	
mAs	CARE Dose4D	
NOISE INDEX		
DOSE REDUCTION		
DFOV	20	
PREP GROUP		
KERNEL	STD	Hr40
ADMIRE		1
THICK/INCR.	STD THN	1.0 q 1.0
KERNEL		Hr40
ADMIRE		1
THICK/INCR.	Bone THN	1.0 q 1.0
KERNEL		Hr64
ADMIRE		1
THICK/INCR.	COR 3	3.0 q 3.0
KERNEL		Hr40
ADMIRE		1
THICK/INCR.	SAG 3	3.0 q 3.0
KERNEL		Hr40
ADMIRE		1

Estimated CTDI	48.56
Estimated DLP	

HELICAL HEAD WITHOUT

196(2) – SIEMENS FORCE

DE HEAD

PARAMETER	DE HEAD		
SCAN TYPE			
ROTATION TIME	1.0 SEC		
THICKNESS	1.0mm		
PITCH	0.7		
SPEED			
INTERVAL	1.0mm		
GANTRY TILT			
SCAN FOV			
kVp	80 / Sn150		
mAs	CAREDose4D		
NOISE INDEX			
DOSE REDUCTION			
DFOV			
KERNEL	STD	Hr40	
ADMIRE	THN	3	
THICK/INCR.	DE	1.5 q 1.0	
KERNEL	#PP	Qr40	
ADMIRE	STD	1	
ADMIRE	THN	1	
THICK/INCR.	COR 3	3.0 q 3.0	
KERNEL		Hr40	
ADMIRE		1	
THICK/INCR.	SAG 3	3.0 q 3.0	
KERNEL		Hr40	
ADMIRE		1	
THICK/INCR.	STD	5.0 q 5.0	
KERNEL		Hr40	
ADMIRE		1	
THICK/INCR.	Bone	0.6 q 0.6	
KERNEL		THN	Hr64
ADMIRE		THN	1

Estimated CTDI	40.13
Estimated DLP	

HELICAL HEAD WITHOUT

196(2) – SIEMENS FORCE

HEAD FAST

PARAMETER	HEAD - FAST	
SCAN TYPE		
ROTATION TIME	0.5 SEC	
THICKNESS	5.0mm	
PITCH	0.55	
SPEED		
INTERVAL	5.0mm	
GANTRY TILT		
SCAN FOV		
kVp	CARE kV – SEMI - 120	
mAs	CARE Dose4D	
NOISE INDEX		
DOSE REDUCTION		
DFOV	20	
PREP GROUP		
KERNEL	STD	Hr40
ADMIRE		1
THICK/INCR.	STD THN	1.0 q 1.0
KERNEL		Hr40
ADMIRE		1
THICK/INCR.	Bone THN	1.0 q 1.0
KERNEL		Hr64
ADMIRE		1
THICK/INCR.	COR 3	3.0 q 3.0
KERNEL		Hr40
ADMIRE		1
THICK/INCR.	SAG 3	3.0 q 3.0
KERNEL		Hr40
ADMIRE		1

Estimated CTDI	50.01
Estimated DLP	

HELICAL HEAD WITHOUT

SIEMENS EDGE

HEAD

PARAMETER	HEAD	
SCAN TYPE		
ROTATION TIME	1.0 SEC	
THICKNESS	5.0mm	
PITCH	0.55	
SPEED		
INTERVAL	5.0mm	
GANTRY TILT		
SCAN FOV		
kVp	120	
mAs	CAREdose4D	
NOISE INDEX		
DOSE REDUCTION		
DFOV	215mm	
PREP GROUP		
KERNEL	STD	Hr40
ADMIRE		1
THICK/INCR.	STD THN	1.0 q 1.0
KERNEL		Hr40
ADMIRE		1
THICK/INCR.	Bone THN	1.0 q 1.0
KERNEL		Hr60
ADMIRE		1
THICK/INCR.	COR 3	3.0 q 3.0
KERNEL		Hr40
ADMIRE		1
THICK/INCR.	SAG 3	3.0 q 3.0
KERNEL		Hr40
ADMIRE		1

Estimated CTDI	
Estimated DLP	

HELICAL HEAD WITHOUT

SIEMENS EDGE

TBDE HEAD

PARAMETER	HEAD	
SCAN TYPE		
ROTATION TIME	0.5 SEC	
THICKNESS	5.0mm	
PITCH	0.35	
SPEED		
INTERVAL	5.0mm	
GANTRY TILT		
SCAN FOV		
kVp	AuSn 120	
mAs	CAREdose4D	
NOISE INDEX		
DOSE REDUCTION		
DFOV	220mm	
PREP GROUP		
KERNEL	STD	Hr40
ADMIRE		1
THICK/INCR.	DE# PP STD THN	1.0 q 0.7
KERNEL		Qv40
ADMIRE		1
THICK/INCR.	STD THN	1.0 q 1.0
KERNEL		Hr40
ADMIRE		1
THICK/INCR.	Bone THN	1.0 q 1.0
KERNEL		Hr60
ADMIRE		1
THICK/INCR.	COR 3	3.0 q 3.0
KERNEL		Hr40
ADMIRE		1
THICK/INCR.	SAG 3	3.0 q 3.0
KERNEL		Hr40
ADMIRE		1

HELICAL HEAD WITHOUT

Estimated CTDI	
Estimated DLP	

HELICAL HEAD WITHOUT

L-SPINE

REVISED: 3/4/2022

INDICATION	TRAUMA / TUMOR
ORAL PREP	
SCAN	NON-CONTRAST L-SPINE
RECON	<ul style="list-style-type: none"> • 1.25mm / 2.0mm AXIAL RECONS – DETAIL / STANDARD ALGORITHM • 1.25mm / 2.0mm AXIAL RECONS – BONE ALGORITHM • 0.625mm AXIAL RECONS – BONE ALGORITHM – NOT SENT TO PACS (GE SCANNERS)
REFORMAT	<ul style="list-style-type: none"> ▪ 2mm CORONAL AND SAGITTAL
3D POST PROCESSING	NONE

IV SIZE		
IV CONTRAST		
INJECTION RATE		
PT POSITION		SUPINE / FEET FIRST
LANDMARK	GE	ILIAC CREST
	SIEMENS	ABOVE DIAPHRAGM
BREATHING		
SCOUTS		AP AND LATERAL

PARAMETER		SCAN
START		T12
END		S1
DFOV		16
PREP GROUP	<u>GE</u>	
	<u>SIEMENS FORCE</u>	
	<u>SIEMENS EDGE</u>	

64 SLICE – GE VCT

L-SPINE

PARAMETER	SCAN	
SCAN TYPE	HELICAL FULL	
ROTATION TIME	0.6 SEC	
THICKNESS	1.25	
PITCH	0.984:1	
SPEED	39.37	
INTERVAL	1.25	
GANTRY TILT		
SCAN FOV	LARGE BODY	
kVp	120	
mA	AUTO mA TO 700	
NOISE INDEX	22.43	
DOSE REDUCTION		
ASIR/MODE	0% / PLUS-E	
ALGORITHM	STD	STANDARD
REFORMATS		
THICK/INCR.	BONE THN	0.625 q 0.625
ALGORITHM		BONE
REFORMATS		COR 2 Bone / SAG 2 Bone
ASIR/MODE		0% / PLUS-E
THICK/INCR.	Bone	1.25 q 1.25
ALGORITHM		BONE
REFORMATS		
ASIR/MODE		0% / PLUS-E

Estimated CTDI	21.31
Estimated DLP	685.12

196(2) – SIEMENS FORCE

L-SPINE

PARAMETER	SCAN	
SCAN TYPE		
ROTATION TIME	1.0 SEC	
THICKNESS	2.0mm	
PITCH	0.8	
SPEED		
INTERVAL	2.0mm	
GANTRY TILT		
SCAN FOV		
kVp	CARE kV – ON	
mAs	CARE Dose4D	
NOISE INDEX		
DOSE REDUCTION		
DFOV	12	
PREP GROUP		
KERNEL	Bone	Br64
ADMIRE		3
THICK/INCR.	STD	2.0 q 2.0
KERNEL		Br36
ADMIRE		3
THICK/INCR.	COR 2 Bone	2.0 q 2.0
KERNEL		Br64
ADMIRE		3
THICK/INCR.	SAG 2 Bone	2.0 q 2.0
KERNEL		Br64
ADMIRE		3
THICK/INCR.	Curved AX Bone	2.0 q 2.0
KERNEL		Br64
ADMIRE		3

Estimated CTDI	15.85
Estimated DLP	

L-SPINE

SIEMENS EDGE


L-SPINE

PARAMETER	L-SPINE	
SCAN TYPE		
ROTATION TIME	1.0 SEC	
THICKNESS	2.0mm	
PITCH	0.8	
SPEED		
INTERVAL	2.0mm	
GANTRY TILT		
SCAN FOV		
kVp	CAREkV – ON	
mAs	CAREdose4D	
NOISE INDEX		
DOSE REDUCTION		
DFOV	120mm	
PREP GROUP		
KERNEL	Bone	Br60
ADMIRE		3
THICK/INCR.	STD	2.0 q 2.0
KERNEL		Br36
ADMIRE		3
THICK/INCR.	COR 2 Bone	2.0 q 2.0
KERNEL		Br60
ADMIRE		3
THICK/INCR.	SAG 2 Bone	2.0 q 2.0
KERNEL		Br60
ADMIRE		3

Estimated CTDI	
Estimated DLP	

MULTIPHASE ACUTE STROKE

REVISED: 3/4/2022

INDICATION	ACUTE STROKE
ORAL PREP	
SCAN	ARTERIAL PHASE HEAD AND NECK, DELAYED COW X2
RECON	<ul style="list-style-type: none"> • 0.6mm AXIAL RECON - STANDARD ALGORITHM (CACO) • 0.6mm AXIAL RECON - STANDARD ALGORITHM (EACH COW)
REFORMAT	<ul style="list-style-type: none"> ▪ 10mm q 5mm MIP AXIAL, CORONAL AND SAGITTAL COW (CACO SCAN) ▪ 2mm MIP CORONAL AND SAGITTAL COW (CACO SCAN) ▪ 4mm q 2mm MIP CORONAL AND SAGITTAL (CAROTIDS) ▪ 10mm q 5mm MIP AXIAL COW (EACH DELAYED COW)
3D POST PROCESSING	 3D ROTATIONS CIRCLE OF WILLIS

IV SIZE	18g / RT AC	
IV CONTRAST	65cc OMNIPAQUE 350	
INJECTION RATE	5cc/SEC	
PT POSITION	SUPINE / HEAD FIRST / TABLETOP / NO PILLOW	
LANDMARK	GE	STENRAL NOTCH
	SIEMENS	BELOW AORTIC ARCH
BREATHING		
SCOUTS	AP AND LATERAL	

PARAMETER		SCAN
START		CARINA
END		TOP OF HEAD
DFOV		20
PREP GROUP	<u>GE</u>	SMART PREP @ ARCH
	<u>SIEMENS FORCE</u>	SMART PREP @ ARCH
	<u>SIEMENS</u>	
	<u>EDGE</u>	

64 SLICE – GE VCT

MULTIPHASE ACUTE STROKE W/ HEAD

PARAMETER	HEAD		SMART PREP*	CTA		COW		COW	
SCAN TYPE	HELICAL FULL			HELICAL FULL		HELICAL FULL		HELICAL FULL	
ROTATION TIME	0.6 SEC			0.5 SEC		0.5 SEC		0.5 SEC	
THICKNESS	5.0mm			0.625mm		0.625mm		0.625mm	
PITCH	0.531:1			0.984:1		0.984:1		0.984:1	
SPEED	10.62			39.37		39.37		39.37	
INTERVAL	5.0mm			0.625mm		0.625mm		0.625mm	
GANTRY TILT									
SCAN FOV	HEAD			LARGE BODY		LARGE BODY		LARGE BODY	
kVp	120			120		120		120	
mA	AUTO mA TO 450		40	AUTO mA TO 700		AUTO mA TO 700		AUTO mA TO 700	
NOISE INDEX	3.50			14.14		14.14		14.14	
DOSE REDUCTION									
ASiR/MODE	90% / PLUS			0% / PLUS-E		0% / PLUS-E		0% / PLUS-E	
ALGORITHM	STD	STANDARD		STD THN CACO	STANDARD	STD THN COW D1	STANDARD	STD THN COW D2	STANDARD
REFORMATS					COR MIP THK / SAG MIP THK		AX MIP THK COW D1		AX MIP THK COW D2
THICK/INCR.	Soft THN	1.25 q 0.625		STD THN COW	0.625 q 0.625				
ALGORITHM		SOFT			STANDARD				
REFORMATS		COR 3 / SAG 3			COR MIP THK COW / SAG MIP THK COW / AX MIP THK COW / COR MIP COW / SAG MIP COW				
ASiR/MODE		90% / PLUS -E			0% / PLUS-E				
THICK/INCR.	Bone THN	1.25 q 0.625							
ALGORITHM		BONE							
REFORMATS									

ASiR/MODE		0% / FULL							
-----------	--	-----------	--	--	--	--	--	--	--

**Dynamic Transition*

Estimated CTDI	121.63
Estimated DLP	2057.68

196(2) – SIEMENS FORCE
MULTIPHASE ACUTE STROKE

PARAMETER	PREMONITORING / SMART PREP		COW CAROTID		COW DELAY 1		COW DELAY 2	
SCAN TYPE	FULL							
ROTATION TIME	0.25 SEC		0.25 SEC		0.25 SEC		0.25 SEC	
THICKNESS	10.0mm		0.6mm		0.6mm		0.6mm	
PITCH			0.7		0.7		0.7	
SPEED								
INTERVAL	0.0mm		0.6mm		0.6mm		0.6mm	
GANTRY TILT								
SCAN FOV								
kVp	100		90 / Sn150		90 / Sn150		90 / Sn150	
mAs	23		CARE Dose4D		CARE Dose4D		CARE Dose4D	
NOISE INDEX								
DOSE REDUCTION								
DFOV	20		18		18		18	
PREP GROUP	8 SEC		SMART PREP		8 SEC		8 SEC	
KERNEL		Br36		Br40	STD THN COW D1	Br40	STD THN COW D2	Br40
ADMIRE			STD THN CACO	3		3		3
THICK/INCR.				1.0 q 0.7	DE #PP STD THN COW D1	1.0 q 0.7	DE #PP STD THN COW D2	1.0 q 0.7
KERNEL			DE #PP STD THN CACO	Qr40		Qr40		Qr40
ADMIRE				3		3		3
THICK/INCR.				10.0 q 5.0	AX MIP THK COW D1	10.0 q 5.0	AX MIP THK COW D2	10.0 q 5.0
KERNEL			AX MIP THK COW	Br40		Br40		Br40
ADMIRE				3		3		3
THICK/INCR.				10.0 q 5.0				
KERNEL			COR MIP THK COW	Br40				
ADMIRE				3				
THICK/INCR.				10.0 q 5.0				
KERNEL				Br40				

ADMIRE			SAG MIP THK COW	3				
THICK/INCR.			COR MIP COW	2.0 q 2.0				
KERNEL				Br40				
ADMIRE				3				
THICK/INCR.			SAG MIP COW	2.0 q 2.0				
KERNEL				Br40				
ADMIRE				3				
THICK/INCR.			COR MIP THK	4.0 q 2.0				
KERNEL				Qr40				
ADMIRE				3				
THICK/INCR.			SAG MIP THK	4.0 q 2.0				
KERNEL				Qr40				
ADMIRE				3				

Estimated CTDI	56.20
Estimated DLP	

196(2) – SIEMENS FORCE
MULTIPHASE ACUTE STROKE W/ HEAD

PARAMETER	HEAD		PREMONITORING / SMART PREP		COW CAROTID		COW DELAY 1		COW DELAY 2			
SCAN TYPE			FULL									
ROTATION TIME	1.0 SEC		0.25 SEC		0.25 SEC		0.25 SEC		0.25 SEC			
THICKNESS	5.0mm		10.0mm		0.6mm		0.6mm		0.6mm			
PITCH	0.55				0.7		0.7		0.7			
SPEED												
INTERVAL	5.0mm		0.0mm		0.6mm		0.6mm		0.6mm			
GANTRY TILT												
SCAN FOV												
kVp	CAREkV- SEMI – 120		100		90 / Sn150		90 / Sn150		90 / Sn150			
mAs	CARE Dose4D		23		CARE Dose4D		CARE Dose4D		CARE Dose4D			
NOISE INDEX												
DOSE REDUCTION												
DFOV	20		20		18		18		18			
PREP GROUP			8 SEC		SMART PREP		8 SEC		8 SEC			
KERNEL	STD	Hr40		Br36	STD THN CACO	Br40	STD THN COW D1	Br40	STD THN COW D2	Br40		
ADMIRE		1				3	3	3	3			
THICK/INCR.	STD THN	1.0 q 1.0			DE #PP STD THN CACO	1.0 q 0.7	DE #PP STD THN COW D1	1.0 q 0.7	DE #PP STD THN COW D2	1.0 q 0.7		
KERNEL		Hr40						Qr40		Qr40	Qr40	
ADMIRE		1						3		3	3	
THICK/INCR.	Bone THN	1.0 q 1.0			AX MIP THK COW	10.0 q 5.0	AX MIP THK COW D1	10.0 q 5.0	AX MIP THK COW D2	10.0 q 5.0		
KERNEL		Hr64						Br40		Br40	Br40	
ADMIRE		1						3		3	3	
THICK/INCR.	COR 3	3.0 q 3.0			COR MIP THK COW	10.0 q 5.0						
KERNEL		Hr40									Br40	Br40
ADMIRE		1									3	3
THICK/INCR.	SAG 3	3.0 q 3.0				10.0 q 5.0						
KERNEL		Hr40									Br40	Br40

MULTIPHASE ACUTE STROKE

ADMIRE		1			SAG MIP THK COW	3				
THICK/INCR.					COR MIP COW	2.0 q 2.0				
KERNEL				Br40						
ADMIRE				3						
THICK/INCR.					SAG MIP COW	2.0 q 2.0				
KERNEL				Br40						
ADMIRE				3						
THICK/INCR.					COR MIP THK	4.0 q 2.0				
KERNEL				Qr40						
ADMIRE				3						
THICK/INCR.					SAG MIP THK	4.0 q 2.0				
KERNEL				Qr40						
ADMIRE				3						

Estimated CTDI	104.76
Estimated DLP	

SIEMENS EDGE

MULTIPHASE ACUTE STROKE W/ HEAD

PARAMETER	HEAD		PREMONITORING / SMART PREP		CACO		COW Delay 1		COW Delay 2	
SCAN TYPE			FULL 0.28 SEC							
ROTATION TIME	1.0 SEC		1.14		0.28 SEC		0.28 SEC		0.28 SEC	
THICKNESS	5.0mm		10mm		0.6mm		0.6mm		0.6mm	
PITCH	0.55				0.45		0.45		0.45	
SPEED										
INTERVAL	5.0mm				0.6mm		0.6mm		0.6mm	
GANTRY TILT										
SCAN FOV										
kVp	CAREkV – SEMI – 120		AuSn 120		AuSn 120		AuSn 120		AuSn 120	
mAs	CAREdose4D		68		CAREdose4D		CAREdose4D		CAREdose4D	
NOISE INDEX										
DOSE REDUCTION										
DFOV	220mm		200mm		200mm		200mm		200mm	
PREP GROUP			8 SEC		SMART PREP		8 SEC		8 SEC	
KERNEL	STD	Hr40		Br36	STD THN CACO	Br40	STD THN COW D1	Br40	STD THN COW D2	Br40
ADMIRE		1				3		3		3
THICK/INCR. KERNEL	STD THN	1.0 q 1.0			DE #PP STD THN	1.0 q 0.7	DE #PP STD THN D1	1.0 q 0.7	DE #PP STD THN D2	1.0 q 0.7
ADMIRE		Hr40				Qv40		Qv40		Qv40
THICK/INCR. KERNEL	Bone THN	1.0 q 1.0			AX MIP THK COW	10.0 q 5.0	AX MIP THK COW D1	10.0 q 5.0	AX MIP THK COW D2	10.0 q 5.0
ADMIRE		Hr60				Br40		Br40		Br40
THICK/INCR. KERNEL	COR 3	3.0 q 3.0			COR MIP THK COW	10.0 q 5.0				
ADMIRE		Hr40				Br40				
THICK/INCR. KERNEL	SAG 3	3.0 q 3.0			SAG MIP THK COW	10.0 q 5.0				
ADMIRE		Hr40				Br40				
THICK/INCR.						2.0 q 2.0				

KERNEL					COR MIP COW	Br40				
ADMIRE						3				
THICK/INCR.					SAG MIP COW	2.0 q 2.0				
KERNEL						Br40				
ADMIRE						3				
THICK/INCR.					COR MIP THK	4.0 q 2.0				
KERNEL						Br40				
ADMIRE						3				

Estimated CTDI	
Estimated DLP	

NEURO-SURG HEAD

REVISED: 3/4/22

INDICATION	
ORAL PREP	
SCAN	NON-CONTRAST HEAD
RECON	<ul style="list-style-type: none">• 1.25mm AXIAL RECON – STANDARD ALGORITHM
REFORMAT	<ul style="list-style-type: none">▪
3D POST PROCESSING	NONE

IV SIZE		
IV CONTRAST		
INJECTION RATE		
PT POSITION		SUPINE / HEAD FIRST
LANDMARK	GE	OMBL
	SIEMENS	
BREATHING		
SCOUTS		LATERAL

PARAMETER		SCAN
START		BASE OF SKULL
END		TOP OF HEAD
DFOV		22
PREP GROUP	GE	
	SIEMENS	

64 SLICE – GE VCT

PARAMETER	SCAN
SCAN TYPE	AXIAL FULL
ROTATION TIME	1.0 SEC
THICKNESS	1.25
PITCH	
SPEED	
INTERVAL	20.0
GANTRY TILT	NO ANGLE
SCAN FOV	HEAD
kVp	120
mA	320
NOISE INDEX	
DOSE REDUCTION	
ASIR/MODE	0% / FULL
ALGORITHM	STD
REFORMATS	STANDARD

Estimated CTDI	61.43
Estimated DLP	614.27

NEURO HEAD

ORBITS BONE (NON-CONTRAST)

REVISED: 3/4/22

INDICATION	VISION LOSS / DOUBLE VISION
ORAL PREP	
SCAN	NON-CONTRAST ORBITS
RECON	<ul style="list-style-type: none"> • 0.6mm / 0.625mm / 1.25mm AXIAL RECON – BONE ALGORITHM • 0.6mm / 0.625mm / 1.25mm AXIAL RECON – STANDARD ALGORITHM
REFORMAT	<ul style="list-style-type: none"> ▪ 2mm CORONAL AND SAGITTAL (BONE ALGORITHM) ▪ 2mm CORONAL AND SAGITTAL (STANDARD ALGORITHM)
3D POST PROCESSING	NONE

IV SIZE		
IV CONTRAST		
INJECTION RATE		
PT POSITION		SUPINE / HEAD FIRST / PT MUST FIX GAZE FOR SCAN
LANDMARK	GE	OMBL
	SIEMENS	TOP OF HEAD
BREATHING		
SCOUTS		AP AND LATERAL

PARAMETER		SCAN
START		MAXILLARY SINUSES
END		ROOF OF ORBITS
DFOV		12
PREP GROUP	<u>GE</u>	
	<u>SIEMENS FORCE</u>	
	<u>SIEMENS EDGE</u>	

64 SLICE – GE VCT

ORBITS - BONE

PARAMETER	SCAN	
SCAN TYPE	HELICAL FULL	
ROTATION TIME	0.5 SEC	
THICKNESS	0.625	
PITCH	0.531:1	
SPEED	10.62	
INTERVAL	0.625	
GANTRY TILT		
SCAN FOV	HEAD	
kVp	120	
mA	200	
NOISE INDEX		
DOSE REDUCTION		
ASIR/MODE	0% / FULL-E	
ALGORITHM	Bone THN	BONE
REFORMATS		COR 2 Bone / SAG 2 Bone
THICK/INCR.	STD THN	0.625 q 0.625
ALGORITHM		STANDARD
REFORMATS		COR 2 / SAG 2
ASIR/MODE		0% / PLUS-E

Estimated CTDI	34.91
Estimated DLP	423.30

196(2) – SIEMENS FORCE

ORBITS BONE

PARAMETER	SCAN	
SCAN TYPE		
ROTATION TIME	0.5 SEC	
THICKNESS	0.6mm	
PITCH	0.8	
SPEED		
INTERVAL	0.6mm	
GANTRY TILT		
SCAN FOV		
kVp	CARE kV – SEMI - 120	
mAs	CARE Dose4D	
NOISE INDEX		
DOSE REDUCTION		
DFOV	12	
PREP GROUP		
KERNEL	Bone THN	Hr59
ADMIRE		3
THICK/INCR.	STD THN	0.6 q 0.6
KERNEL		Hr36
ADMIRE		3
THICK/INCR.	COR 2 Bone	2.0 q 2.0
KERNEL		Hr59
ADMIRE		3
THICK/INCR.	SAG 2 Bone	2.0 q 2.0
KERNEL		Hr59
ADMIRE		3
THICK/INCR.	COR 2	2.0 q 2.0
KERNEL		Hr36
ADMIRE		3
THICK/INCR.	SAG 2	2.0 q 2.0
KERNEL		Hr36
ADMIRE		3

Estimated CTDI	12.58
Estimated DLP	

SIEMENS EDGE

ORBITS BONE

PARAMETER	ORBITS	
SCAN TYPE		
ROTATION TIME	1.0 SEC	
THICKNESS	0.6mm	
PITCH	0.8	
SPEED		
INTERVAL	0.6mm	
GANTRY TILT		
SCAN FOV		
kVp	CAREkV – SEMI - 120	
mAs	CAREdose4D	
NOISE INDEX		
DOSE REDUCTION		
DFOV	150mm	
PREP GROUP		
KERNEL	Bone THN	Hr60
ADMIRE		3
THICK/INCR.	STD THN	0.6 q 0.6
KERNEL		Hr38
ADMIRE		3
THICK/INCR.	COR 2 Bone	2.0 q 2.0
KERNEL		Hr60
ADMIRE		3
THICK/INCR.	SAG 2 Bone	2.0 q 2.0
KERNEL		Hr60
ADMIRE		3
THICK/INCR.	COR 2	2.0 q 2.0
KERNEL		Hr38
ADMIRE		3
THICK/INCR.	SAG 2	2.0 q 2.0
KERNEL		Hr38
ADMIRE		3

Estimated CTDI	
Estimated DLP	

ORBITS BONE

ORBITS - SOFT TISSUE (CONTRAST)

REVISED: 3/4/22

INDICATION	VISION LOSS / DOUBLE VISION
ORAL PREP	
SCAN	I+ SCAN OF ORBITS AFTER DUAL INJECTION (5 MINUTES AND 45 SECONDS BEFORE SCAN)
RECON	<ul style="list-style-type: none"> • 0.625mm OR 1.25mm AXIAL RECON – STANDARD ALGORITHM • 0.625mm OR 1.25mm AXIAL RECON – BONE ALGORITHM
REFORMAT	<ul style="list-style-type: none"> ▪ 2mm CORONAL AND SAGITTAL (BONE ALGORITHM) ▪ 2mm CORONAL AND SAGITTAL (STANDARD ALGORITHM)
3D POST PROCESSING	NONE

IV SIZE		
IV CONTRAST		110cc OMNIPAQUE 350
INJECTION RATE		
PT POSITION		SUPINE / HEAD FIRST / PT MUST FIX GAZE
LANDMARK	GE	OMBL
	SIEMENS	TOP OF HEAD
BREATHING		
SCOUTS		AP AND LATERAL

PARAMETER		SCAN
START		MAXILLARY SINUSES
END		ROOF OF ORBITS
DFOV		12
PREP GROUP	<u>GE</u>	35-45 SEC
	<u>SIEMENS FORCE</u>	45 SEC
	<u>SIEMENS</u>	
	<u>EDGE</u>	

*DUAL INJECTION: Use 110cc Omnipaque, inject 60cc, wait 5 minutes, give remaining 50cc at 35 sec delay.

64 SLICE – GE VCT

ORBITS WITH

PARAMETER	SCAN	
SCAN TYPE	HELICAL FULL	
ROTATION TIME	0.5 SEC	
THICKNESS	0.625	
PITCH	0.531:1	
SPEED	10.62	
INTERVAL	0.625	
GANTRY TILT		
SCAN FOV	HEAD	
kVp	120	
mA	300	
NOISE INDEX		
DOSE REDUCTION		
ASIR/MODE	0% / PLUS-E	
ALGORITHM	STD THN With	STANDARD
REFORMATS		COR 2 With / SAG 2 With
THICK/INCR.	Bone THN With	0.625 q 0.625
ALGORITHM		BONE
REFORMATS		COR 2 Bone With / SAG 2 Bone With
ASiR/MODE		0% / FULL-E

Estimated CTDI	52.36
Estimated DLP	634.95

196(2) – SIEMENS FORCE

ORBITS WITH

PARAMETER	ORBITS WITH	
SCAN TYPE		
ROTATION TIME	0.5 SEC	
THICKNESS	0.6mm	
PITCH	0.8	
SPEED		
INTERVAL	0.6mm	
GANTRY TILT		
SCAN FOV		
kVp	CARE kV – SEMI - 120	
mAs	CARE Dose4D	
NOISE INDEX		
DOSE REDUCTION		
DFOV	12	
PREP GROUP	45 SEC	
KERNEL	Bone THN	Hr59
ADMIRE	With	3
THICK/INCR.	STD	0.6 q 0.6
KERNEL	THN	Hr36
ADMIRE	With	3
THICK/INCR.	COR 2	2.0 q 2.0
KERNEL	Bone	Hr59
ADMIRE	With	3
THICK/INCR.	SAG 2	2.0 q 2.0
KERNEL	Bone	Hr59
ADMIRE	With	3
THICK/INCR.	COR 2	2.0 q 2.0
KERNEL	With	Hr36
ADMIRE		3
THICK/INCR.	SAG 2	2.0 q 2.0
KERNEL	With	Hr36
ADMIRE		3

Estimated CTDI	12.58
Estimated DLP	

ORBITS SOFT TISSUE

196(2) – SIEMENS FORCE

ORBITS WITHOUT AND WITH

PARAMETER	W/O		W/	
SCAN TYPE				
ROTATION TIME	0.5 SEC		0.5 SEC	
THICKNESS	0.6mm		0.6mm	
PITCH	0.8		0.8	
SPEED				
INTERVAL	0.6mm		0.6mm	
GANTRY TILT				
SCAN FOV				
kVp	CARE kV – SEMI - 120		CARE kV – SEMI - 120	
mAs	CARE Dose4D		CARE Dose4D	
NOISE INDEX				
DOSE REDUCTION				
DFOV	12		12	
PREP GROUP			45 SEC	
KERNEL	Bone THN	Hr59	Bone THN With	Hr59
ADMIRE		3		3
THICK/INCR.	STD THN	0.6 q 0.6	STD THN With	0.6 q 0.6
KERNEL		Hr36		Hr36
ADMIRE		3		3
THICK/INCR.	COR 2 Bone	2.0 q 2.0	COR 2 Bone With	2.0 q 2.0
KERNEL		Hr59		Hr59
ADMIRE		3		3
THICK/INCR.	SAG 2 Bone	2.0 q 2.0	SAG 2 Bone With	2.0 q 2.0
KERNEL		Hr59		Hr59
ADMIRE		3		3
THICK/INCR.	COR 2	2.0 q 2.0	COR 2 With	2.0 q 2.0
KERNEL		Hr36		Hr36
ADMIRE		3		3
THICK/INCR.	SAG 2	2.0 q 2.0	SAG 2 With	2.0 q 2.0
KERNEL		Hr36		Hr36
ADMIRE		3		3

Estimated CTDI	25.16
Estimated DLP	

ORBITS SOFT TISSUE

SIEMENS EDGE

ORBITS WITH

PARAMETER	ORBITS	
SCAN TYPE		
ROTATION TIME	1.0 SEC	
THICKNESS	0.6mm	
PITCH	0.8	
SPEED		
INTERVAL	0.6mm	
GANTRY TILT		
SCAN FOV		
kVp	CAREkV – SEMI - 120	
mAs	CAREdose4D	
NOISE INDEX		
DOSE REDUCTION		
DFOV	150mm	
PREP GROUP	45 SEC	
KERNEL	Bone THN With	Hr60
ADMIRE		3
THICK/INCR.	STD THN With	0.6 q 0.6
KERNEL		Hr38
ADMIRE		3
THICK/INCR.	COR 2 Bone With	2.0 q 2.0
KERNEL		Hr60
ADMIRE		3
THICK/INCR.	SAG 2 Bone With	2.0 q 2.0
KERNEL		Hr60
ADMIRE		3
THICK/INCR.	COR 2 With	2.0 q 2.0
KERNEL		Hr38
ADMIRE		3
THICK/INCR.	SAG 2 With	2.0 q 2.0
KERNEL		Hr38
ADMIRE		3

ORBITS SOFT TISSUE

Estimated CTDI	
Estimated DLP	

PARATHYROID

REVISED: 3/4/2022

INDICATION	PARATHYROID ADENOMAS
ORAL PREP	
SCAN	<ul style="list-style-type: none"> • NON-CONTRAST • 25 SEC ARTERIAL PHASE • 80 SEC PHASE
RECON	<ul style="list-style-type: none"> • 1.0mm AXIAL RECONS – STANDARD ALGORITHM (ALL PHASES)
REFORMAT	<ul style="list-style-type: none"> ▪ 1mm CORONAL AND SAGITTAL – ARTERIAL AND VENOUS PHASES
3D POST PROCESSING	

IV SIZE	20G OR 18G
IV CONTRAST	75cc OMNIPAQUE 350
INJECTION RATE	4cc/SEC
PT POSITION	SUPINE / HEAD FIRST
LANDMARK	GE
	SIEMENS
BREATHING	
SCOUTS	AP AND LATERAL

PARAMETER		NON-CONTRAST	ARTERIAL PHASE	VENOUS PHASE
START		HYOID	MID MANDIBLE	MID MANDIBLE
END		TOP OF STERNUM	CARINA	CARINA
DFOV		20	20	20
PREP GROUP	GE			
	SIEMENS FORCE		SMART PREP	80 SEC
	SIEMENS EDGE			

196(2) – SIEMENS FORCE

PARATHYROID

PARAMETER	NON-CONTRAST		PREMONITORING / SMART PREP		DE ARTERIAL		DE PV	
SCAN TYPE			FULL					
ROTATION TIME	1.0 SEC		0.25 SEC		0.25 SEC		0.25 SEC	
THICKNESS	1.0mm		10.0mm		1.0mm		1.0mm	
PITCH	0.8				0.7		0.7	
SPEED								
INTERVAL	1.0mm		0.0mm		1.0mm		1.0mm	
GANTRY TILT								
SCAN FOV								
kVp	CAREkV		100		90 / Sn150		90 / Sn150	
mAs	CARE Dose4D		23		CARE Dose4D		CARE Dose4D	
NOISE INDEX								
DOSE REDUCTION								
DFOV	20		20		20		20	
PREP GROUP			8 SEC		25 SEC		80 SEC	
KERNEL	STD WO	Br40		Br36	STD ART	Br40	STD	Br40
ADMIRE		3				1		1
THICK/INCR.						1.0 q 1.0		COR 2
KERNEL			Br40	Br40				
ADMIRE			3	3				
THICK/INCR.					SAG 1 ART	1.0 q 1.0	SAG 2	1.0 q 1.0
KERNEL						Br40		Br40
ADMIRE						3		3

Estimated CTDI	7.94
Estimated DLP	

SIEMENS EDGE
TBDE PARATHYROID

PARAMETER	PARA WO		PREMONITORING / SMART PREP		PARA ART		PARA CTV	
SCAN TYPE			FULL 0.28 SEC					
ROTATION TIME	0.28 SEC		1.14 SEC		0.28 SEC		0.28 SEC	
THICKNESS	1.0mm		10mm		1.0mm		1.0mm	
PITCH	0.45				0.45		0.45	
SPEED								
INTERVAL	1.0mm				1.0mm		1.0mm	
GANTRY TILT								
SCAN FOV								
kVp	AuSn 120		AuSn 120		AuSn 120		AuSn 120	
mAs	CAREdDose4D		68		CAREdDose4D		CAREdDose4D	
NOISE INDEX								
DOSE REDUCTION								
DFOV	200mm		200mm		200mm		200mm	
PREP GROUP			10 SEC		SMART PREP		60 SEC	
KERNEL	STD	Br40		Br36	STD	Br40	STD	Br40
ADMIRE	WO	3			ART	1		1
THICK/INCR.	DE	1.0 q 0.7			DE	1.0 q 0.7	DE	1.0 q 0.7
KERNEL	#PP	Qv40			#PP	Qv40	#PP	Qv40
ADMIRE	STD				STD		STD	
	THN				THN		THN	
	WO				ART			
THICK/INCR.					COR 1	1.0 q 1.0	COR 1	1.0 q 1.0
KERNEL					ART	Br40		Br40
ADMIRE						2		3
THICK/INCR.					SAG 1	1.0 q 1.0	SAG 1	1.0 q 1.0
KERNEL					ART	Br40		Br40
ADMIRE						3		3

Estimated CTDI	
Estimated DLP	

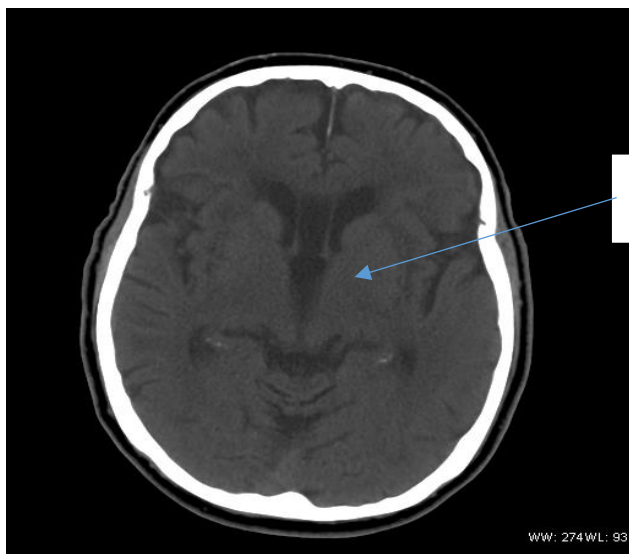
PERFUSION

Revised: 3/4/2022

INDICATION	ACUTE STROKE / VASOSPASM
ORAL PREP	
SCAN	<ol style="list-style-type: none"> 1. NON-CONTRAST HEAD 2. I+ CINE SCAN AT WITH LOWEST SLICE AT INTERNAL CAPSULE
RECON	<ul style="list-style-type: none"> • 5.0mm AXIAL RECONS – STANDARD ALGORITHM (BOTH) • 1.25mm AXIAL RECONS – SOFT ALGORITHM (I- ONLY) • 2.5mm AXIAL RECONS – BONE ALGORITHM (I- ONLY)
REFORMAT	▪
3D POST PROCESSING	📊 PERFUSION MAPS

IV SIZE	18g OR 20g / RT AC	
IV CONTRAST	40cc OMNIPAQUE 350	
INJECTION RATE	4-5cc/SEC	
PT POSITION	SUPINE / HEAD FIRST	
LANDMARK	GE	OMBL
	SIEMENS	
BREATHING		
SCOUTS	AP AND LATERAL	

PARAMETER	NON-CONTRAST	PERFUSION
START	BASE OF SKULL	INTERNAL CAPSULE
END	TOP OF HEAD	5mm ABOVE INTERNAL CAPSULE
DFOV	22	25
PREP GROUP	<u>GE</u>	5 SEC
	SIEMENS FORCE	5 SEC
	<u>SIEMENS EDGE</u>	



INTERNAL CAPSULE

PERFUSION

64 SLICE – GE VCT

PERFUSION

PARAMETER	I(-) HEAD		PEFUSION	
SCAN TYPE	HELICAL FULL		CINE FULL	
ROTATION TIME	0.5 SEC		1.0 SEC	
THICKNESS	5.0		5.0	
PITCH	0.531:1			
SPEED	10.62			
INTERVAL	5.0		0.0	
GANTRY TILT				
SCAN FOV	HEAD		HEAD	
kVp	120		80	
mA	AUTO mA TO 450		200	
NOISE INDEX	3.50			
DOSE REDUCTION				
ASIR/MODE	90% / PLUS		0% / FULL	
ALGORITHM	STD PRE	STANDARD	STD	STANDARD
REFORMATS				
THICK/INCR.	Soft THN PRE	1.25 q 0.625		
ALGORITHM		SOFT		
REFORMATS		COR 3 PRE / SAG 3 PRE		
ASIR/MODE		90% / PLUS- E		
THICK/INCR.	Bone PRE	2.5 q 2.5		
ALGORITHM		BONE		
REFORMATS				
ASIR/MODE		0% / FULL		

Estimated CTDI	639.47
Estimated DLP	3181.09

SIEMENS EDGE

PERFUSION

PARAMETER	HEAD WO		PERFUSION	
SCAN TYPE				
ROTATION TIME	1.0 SEC		1.5 SEC	
THICKNESS	5.0mm		100mm	
PITCH	0.55			
SPEED				
INTERVAL	5.0mm		4.0mm	
GANTRY TILT				
SCAN FOV				
kVp	CAREKV – ON		70	
mAs	CAREdose4D		200	
NOISE INDEX				
DOSE REDUCTION				
DFOV	200mm		200mm	
PREP GROUP			5 SEC	
KERNEL	STD	Hr40	STD	Hr40
ADMIRE		1		
THICK/INCR.	STD THN	1.0 q 1.0	Perfusion	5.0 q 3.0
KERNEL		Hr40		Hr40
ADMIRE		1		
THICK/INCR.	Bone THN	1.0 q 1.0	Perfusion THN	1.5 q 1.0
KERNEL		Hr60		Hr40
ADMIRE		1		
THICK/INCR.	COR 3	3.0 q 3.0		
KERNEL		Hr40		
ADMIRE		1		
THICK/INCR.	SAG 3	3.0 q 3.0		
KERNEL		Hr40		
ADMIRE		1		

Estimated CTDI	
Estimated DLP	

PITUITARY

REVISED: 3/4/22

INDICATION	TUMOR
ORAL PREP	
SCAN	I+ SCAN – 5 MINUTES AFTER CONTRAST INJECTION
RECON	<ul style="list-style-type: none"> • 0.625mm AXIAL RECON – STANDARD ALGORITHM • 0.625mm AXIAL RECON – BONE ALGORITHM
REFORMAT	<ul style="list-style-type: none"> ▪ 2mm CORONAL AND SAGITTAL
3D POST PROCESSING	NONE

IV SIZE		
IV CONTRAST		110cc OMNIPAQUE 350
INJECTION RATE		
PT POSITION		SUPINE / HEAD FIRST
LANDMARK	GE	OMBL
	SIEMENS	
BREATHING		
SCOUTS		AP AND LATERAL

PARAMETER		SCAN
START		BASE OF CLIVUS
END		CLINOIDS
DFOV		12
PREP GROUP	<u>GE</u>	5 MINUTES
	SIEMENS FORCE	
	SIEMENS EDGE	

64 SLICE – GE VCT

PITUITARY

PARAMETER	SCAN	
SCAN TYPE	HELICAL FULL	
ROTATION TIME	0.8 SEC	
THICKNESS	0.625	
PITCH	0.969:1	
SPEED	19.37	
INTERVAL	0.625	
GANTRY TILT		
SCAN FOV	HEAD	
kVp	120	
mA	335	
NOISE INDEX		
DOSE REDUCTION		
ASIR/MODE	0% / PLUS-E	
ALGORITHM	STD	STANDARD
REFORMATS		COR 2 / SAG 2
THICK/INCR.	Bone THN	0.625 q 0.625
ALGORITHM		BONE
REFORMATS		COR 2 Bone / SAG 2 Bone
ASIR/MODE		0% / PLUS-E

Estimated CTDI	51.54
Estimated DLP	728.86

SOFT TISSUE NECK WITH

REVISED: 3/4/22

INDICATION	NECK TUMOR / LYMPHADENOPATHY
ORAL PREP	
SCAN	I+ SCAN 90 SEC DELAY
RECON	<ul style="list-style-type: none"> • 2.0mm / 2.5mm AXIAL RECONS –STANDARD ALGORITHM • 0.6mm / 0.625mm / 1.25mm AXIAL RECONS – STANDARD ALGORITHM • 0.6mm / 0.625mm AXIAL RECONS – BONE ALGORITHM (HYOID TO TOP OF SCAN) • 0.625mm AXIAL RECONS – STANDARD ALGORITHM – ANGLED CUTS AS NEEDED
REFORMAT	<ul style="list-style-type: none"> ▪ 2mm CORONAL AND SAGITTAL
3D POST PROCESSING	

IV SIZE		
IV CONTRAST	110cc OMNIPAQUE 350	
INJECTION RATE	3cc/SEC	
PT POSITION	SUPINE / HEAD FIRST	
LANDMARK	GE	STERNAL NOTCH
	SIEMENS	
BREATHING		
SCOUTS	AP AND LATERAL	

PARAMETER		SCAN
START		JUST BELOW CLAVICLES
END		TOP OF EAR
DFOV		20
PREP GROUP	<u>GE</u>	90 SEC
	<u>SIEMENS FORCE</u>	90 SEC
	<u>SIEMENS EDGE</u>	

Bone Recon: Hyoid to top of scan. 14 dFOV

HOARSNESS: End scan at Carina

LARYNX: Recon 0.625mm thick by 0.625mm increment, 10 dFov with cuts that are angled with the hyoid, down 60 slices, and centered at the airway.

Puffed Cheeks: Only if requested by Radiologist

SOFT TISSUE NECK WITH

64 SLICE – GE VCT

ST NECK WITH

PARAMETER	SCAN		ANGLED CUTS	
SCAN TYPE	HELICAL FULL		AXIAL FULL	
ROTATION TIME	0.8 SEC		0.8 SEC	
THICKNESS	2.5		0.625	
PITCH	0.516:1			
SPEED	39.37			
INTERVAL	2.5		10	
GANTRY TILT				
SCAN FOV	SMALL BODY		LARGE BODY	
kVp	120		120	
mA	AUTO mA TO 350 W/ SMART mA		AUTO mA to 440	
NOISE INDEX	11.83		12.60	
DOSE REDUCTION	30%			
ASIR/MODE	30% / PLUS		0% / FULL	
ALGORITHM	STD	STANDARD	Angled Cuts	STANDARD
REFORMATS				
THICK/INCR.	STD THN	1.25 q 0.700		
ALGORITHM		STANDARD		
REFORMATS		COR 2 / SAG 2		
ASIR/MODE		30% / PLUS-E		
THICK/INCR.	Bone THN	0.625 q 0.625		
ALGORITHM		BONE		
REFORMATS				
ASIR/MODE		30% / PLUS-E		

Estimated CTDI	40.6
Estimated DLP	570.56

SOFT TISSUE NECK WITH

196(2) – SIEMENS FORCE

ST NECK WITH

PARAMETER		DE ST NECK
SCAN TYPE		
ROTATION TIME		0.25 SEC
THICKNESS		2.0mm
PITCH		0.7
SPEED		
INTERVAL		2.0mm
GANTRY TILT		
SCAN FOV		
kVp		90 / Sn150
mAs		CARE Dose4D
NOISE INDEX		
DOSE REDUCTION		
DFOV		20
PREP GROUP		45 SEC
KERNEL	STD	Br40
ADMIRE		1
THICK/INCR.	DE #PP STD THN	0.75 q 0.5
KERNEL		Qr40
ADMIRE		3
THICK/INCR.	COR 2	2.0 q 2.0
KERNEL		Br40
ADMIRE		3
THICK/INCR.	SAG 2	2.0 q 2.0
KERNEL		Br40
ADMIRE		3
THICK/INCR.	STD THN	0.6 q 0.6
KERNEL		Br40
ADMIRE		1
THICK/INCR.	Bone THN	0.6 q 0.6
KERNEL		Br64
ADMIRE		1

Estimated CTDI	3.97
Estimated DLP	

SOFT TISSUE NECK WITH

SIEMENS EDGE

ST NECK WITH

PARAMETER	ST NECK		ANGLE	
SCAN TYPE				
ROTATION TIME	1.0 SEC		1.0 SEC	
THICKNESS	2.0mm		2.0mm	
PITCH	0.8		0.8	
SPEED				
INTERVAL	2.0mm		2.0mm	
GANTRY TILT			ANGLE TO TEETH	
SCAN FOV				
kVp	CAREKV – ON		CAREKV – ON	
mAs	CAREdDose4D		CAREdDose4D	
NOISE INDEX				
DOSE REDUCTION				
DFOV	200mm		200MM	
PREP GROUP	90 SEC			
KERNEL	STD	Br40	Angle	Br40
ADMIRE		1		1
THICK/INCR.	COR 2	2.0 q 2.0		
KERNEL		Br40		
ADMIRE		3		
THICK/INCR.	SAG 2	2.0 q 2.0		
KERNEL		Br40		
ADMIRE		3		
THICK/INCR.	STD THN	0.6 q 0.6		
KERNEL		Br40		
ADMIRE		1		
THICK/INCR.	Bone THN	0.6 q 0.6		
KERNEL		Hr60		
ADMIRE		1		

Estimated CTDI	
Estimated DLP	

SOFT TISSUE NECK WITH

SIEMENS EDGE

TBDE ST NECK WITH

PARAMETER	TB_NECK_W		ANGLE	
SCAN TYPE				
ROTATION TIME	0.28 SEC		1.0 SEC	
THICKNESS	2.0mm		2.0mm	
PITCH	0.45		0.55	
SPEED				
INTERVAL	2.0mm		2.0mm	
GANTRY TILT			ANGLE TO TEETH	
SCAN FOV				
kVp	AuSn 120		CAREkV – ON	
mAs	CAREdose4D		CAREdose4D	
NOISE INDEX				
DOSE REDUCTION				
DFOV	200mm		200MM	
PREP GROUP	90 SEC			
KERNEL	STD	Br40	Angle	Br40
ADMIRE		1		1
THICK/INCR.	DE #PP STD THN	1.0 q 0.7		
KERNEL		Qv40		
ADMIRE				
THICK/INCR.	COR 2	2.0 q 2.0		
KERNEL		Br40		
ADMIRE		3		
THICK/INCR.	SAG 2	2.0 q 2.0		
KERNEL		Br40		
ADMIRE		3		
THICK/INCR.	STD THN	0.6 q 0.6		
KERNEL		Br40		
ADMIRE		1		
THICK/INCR.	Bone THN	0.6 q 0.6		
KERNEL		Hr60		
ADMIRE		1		

Estimated CTDI	
Estimated DLP	

SOFT TISSUE NECK WITH

SOFT TISSUE NECK WITHOUT

REVISED: 3/4/2022

INDICATION	
ORAL PREP	
SCAN	I- SCAN
RECON	<ul style="list-style-type: none"> • 2.5mm AXIAL RECONS –STANDARD ALGORITHM • 0.625mm / 1.25mm AXIAL RECONS – STANDARD ALGORITHM • 0.6mm / 0.625mm AXIAL RECONS – BONE ALGORITHM (HYOID TO TOP OF SCAN) • 0.625mm AXIAL RECONS – STANDARD ALGORITHM – ANGLED CUTS AS NEEDED
REFORMAT	<ul style="list-style-type: none"> ▪ 2mm CORONAL AND SAGITTAL
3D POST PROCESSING	

IV SIZE		
IV CONTRAST		
INJECTION RATE		
PT POSITION		SUPINE / HEAD FIRST
LANDMARK	GE	STERNAL NOTCH
	SIEMENS	
BREATHING		
SCOUTS		AP AND LATERAL

PARAMETER		SCAN
START		JUST BELOW CLAVICLES
END		TOP OF EAR
DFOV		20
PREP GROUP	<u>GE</u>	
	SIEMENS FORCE	
	SIEMENS EDGE	

Bone Recon: Hyoid to top of scan. 14 dFOV

HOARSNESS: End scan at Carina

LARYNX: Recon 0.625mm thick by 0.625mm increment, 10 dFov with cuts that are angled with the hyoid, down 60 slices, and centered at the airway.

Puffed Cheeks: Only if requested by Radiologist

64 SLICE – GE VCT

ST NECK WITHOUT

PARAMETER	SCAN		ANGLED CUTS	
SCAN TYPE	HELICAL FULL		AXIAL FULL	
ROTATION TIME	0.8 SEC		0.8 SEC	
THICKNESS	2.5		0.625	
PITCH	0.516:1			
SPEED	39.37			
INTERVAL	2.5		10	
GANTRY TILT				
SCAN FOV	SMALL BODY		LARGE BODY	
kVp	120		120	
mA	AUTO mA TO 350 W/ SMART mA		AUTO mA to 440	
NOISE INDEX	11.83		12.60	
DOSE REDUCTION	30%			
ASIR/MODE	30% / PLUS		0% / FULL	
ALGORITHM	STD	STANDARD	Angled Cuts	STANDARD
REFORMATS	WO			
THICK/INCR.	STD THN WO	0.625 q 0.625		
ALGORITHM		STANDARD		
REFORMATS		COR 2 WO / SAG 2 WO		
ASIR/MODE		30% / PLUS-E		
THICK/INCR.	Bone THN	0.625 q 0.625		
ALGORITHM		Bone		
REFORMATS				
ASIR/MODE				

Estimated CTDI	40.6
Estimated DLP	570.56

SOFT TISSUE NECK WITHOUT

SPINE – BONE MARROW

REVISED: 3/4/22

INDICATION	
ORAL PREP	
SCAN	DUAL ENERGY
RECON	<ul style="list-style-type: none"> • 2.0mm AXIAL RECON – BONE ALGORITHM • 0.6mm AXIAL RECON - BONE ALGORITHM
REFORMAT	<ul style="list-style-type: none"> ▪ 2.0mm CORONAL AND SAGITTAL
3D POST PROCESSING	DE BONE MARROW MAPPING

IV SIZE		
IV CONTRAST		
INJECTION RATE		
PT POSITION		SUPINE / FEET FIRST
LANDMARK	GE	N/A
	SIEMENS	ABOVE SHOULDERS (T-SPINE OR T/L-SPINE) ABOVE DIAPHRAGM (L-SPINE)
BREATHING		
SCOUTS		AP AND LATERAL

PARAMETER		SCAN
START		C7 (T-SPINE OR T/L-SPINE) OR T12 (L-SPINE)
END		L1 (T-SPINE) OR S1 (T/L- SPINE OR L-SPINE)
DFOV		30
PREP GROUP	GE	
	SIEMENS FORCE	
	SIEMENS EDGE	

196(2) – SIEMENS FORCE

SPINE – BONE MARROW

PARAMETER		DE SPINE
SCAN TYPE		
ROTATION TIME		0.5 SEC
THICKNESS		2.0mm
PITCH		0.6
SPEED		
INTERVAL		2.0mm
GANTRY TILT		
SCAN FOV		90 / Sn150
kVp		CARE Dose4D
mAs		
NOISE INDEX		
DOSE REDUCTION		
DFOV		30
PREP GROUP		
KERNEL	Bone	Br64
ADMIRE		3
THICK/INCR.	DE #PP STD THN	0.6 q 0.6
KERNEL		Qr40
ADMIRE		2
THICK/INCR.	Bone THN	0.6 q 0.6
KERNEL		Br64
ADMIRE		3
THICK/INCR.	COR 2 Bone	2.0 q 2.0
KERNEL		Br64
ADMIRE		3
THICK/INCR.	SAG 2 Bone	2.0 q 2.0
KERNEL		Br64
ADMIRE		3
THICK/INCR.	Curved AX Bone	2.0 q 2.0
KERNEL		Br64
ADMIRE		3

Estimated CTDI	15.07
Estimated DLP	

SPINE – HARDWARE

REVISED: 3/4/2022

INDICATION	
ORAL PREP	
SCAN	DUAL ENERGY
RECON	<ul style="list-style-type: none"> • 2.0mm AXIAL RECON – BONE ALGORITHM • 2.0mm AXIAL RECON – STANDARD ALGORITHM
REFORMAT	<ul style="list-style-type: none"> ▪ 2.0mm CORONAL AND SAGITTAL
3D POST PROCESSING	

IV SIZE		
IV CONTRAST		
INJECTION RATE		
PT POSITION		SUPINE / FEET FIRST
LANDMARK	GE	N/A
	SIEMENS	ABOVE SHOULDERS (T-SPINE OR T/L-SPINE) ABOVE DIAPHRAGM (L-SPINE)
BREATHING		
SCOUTS		AP AND LATERAL

PARAMETER		SCAN
START		C7 (T-SPINE OR T/L-SPINE) OR T12 (L-SPINE)
END		L1 (T-SPINE) OR S1 (T/L-SPINE OR L-SPINE)
DFOV		12
PREP GROUP	GE	
	SIEMENS FORCE	
	SIEMENS EDGE	

196(2) – SIEMENS FORCE

SPINE - HARDWARE

PARAMETER	DE SPINE	
SCAN TYPE		
ROTATION TIME	0.5 SEC	
THICKNESS	0.6mm	
PITCH	0.5	
SPEED		
INTERVAL	0.6mm	
GANTRY TILT		
SCAN FOV		
kVp	100 / Sn150	
mAs	CARE Dose	
NOISE INDEX		
DOSE REDUCTION		
DFOV	12	
PREP GROUP		
KERNEL	Bone THN	Br64
ADMIRE		3
THICK/INCR.	STD THN	0.6 q 0.6
KERNEL		Br36
ADMIRE		3
THICK/INCR.	DE #PP STD THN	0.6 q 0.6
KERNEL		Qr40
ADMIRE		2
THICK/INCR.	COR 2 Bone	2.0 q 2.0
KERNEL		Br64
ADMIRE		3
THICK/INCR.	SAG 2 Bone	2.0 q 2.0
KERNEL		Br64
ADMIRE		3

Estimated CTDI	19.87
Estimated DLP	

STEALTH HEAD

REVISED: 3/4/2022

INDICATION	PRE-OP SURGERY
ORAL PREP	
SCAN	NON-CONTRAST
RECON	<ul style="list-style-type: none">1.25mm / 2.0mm AXIAL RECONS – STANDARD ALGORITHM
REFORMAT	<ul style="list-style-type: none">
3D POST PROCESSING	

IV SIZE		
IV CONTRAST		
INJECTION RATE		
PT POSITION		SUPINE / HEAD FIRST / IN STEALTH SPONGE
LANDMARK	GE	OMBL
	SIEMENS	BELOW MANDIBLE
BREATHING		
SCOUTS		AP AND LATERAL

PARAMETER		SCAN
START		BASE OF SKULL
END		TOP OF HEAD
DFOV		25
PREP GROUP	<u>GE</u>	
	<u>SIEMENS FORCE</u>	
	<u>SIEMENS EDGE</u>	

64 SLICE – GE VCT

STEALTH HEAD

PARAMETER	SCAN	
SCAN TYPE	AXIAL FULL	
ROTATION TIME	1.0 SEC	
THICKNESS	1.25	
PITCH		
SPEED		
INTERVAL	20.0	
GANTRY TILT		
SCAN FOV	HEAD	
kVp	120	
mA	335	
NOISE INDEX		
DOSE REDUCTION		
ASIR/MODE	40% / FULL	
ALGORITHM	STD	STANDARD
REFORMATS		

Estimated CTDI	64.31
Estimated DLP	771.67

196(2) – SIEMENS FORCE

STEALTH/STEREO HEAD

PARAMETER	STEALTH/STEREO HEAD	
SCAN TYPE		
ROTATION TIME	0.5 SEC	
THICKNESS	2.0mm	
PITCH	0.55	
SPEED		
INTERVAL	2.0mm	
GANTRY TILT		
SCAN FOV		
kVp	CARE kV	
mAs	CARE Dose4D	
NOISE INDEX		
DOSE REDUCTION		
DFOV	25	
PREP GROUP		
KERNEL	STD	Hf38
ADMIRE		3

Estimated CTDI	47.54
Estimated DLP	

STEALTH SINUSES

REVISED: 3/4/22

INDICATION	PRE-OP SINUS SURGERY
ORAL PREP	
SCAN	NON-CONTRAST
RECON	<ul style="list-style-type: none"> • 0.6mm / 0.625mm AXIAL RECONS – STANDARD ALGORITHM • 0.6mm / 0.625mm AXIAL RECONS – BONE ALGORITHM –TARGETED TO SINUSES • 0.6mm / 0.625mm AXIAL RECONS – STANDARD ALGORITHM – TARGETED TO SINUSES
REFORMAT	<ul style="list-style-type: none"> ▪ 2mm CORONAL AND SAGITTAL
3D POST PROCESSING	

IV SIZE		
IV CONTRAST		
INJECTION RATE		
PT POSITION		SUPINE / HEAD FIRST / IN STEALTH SPONGE
LANDMARK	GE	OMBL
	SIEMENS	BELOW MANDIBLE
BREATHING		
SCOUTS		AP AND LATERAL

PARAMETER		SCAN
START		BELOW MAXILLARY TEETH
END		TOP OF HEAD WITH AIR GAP
DFOV		25
PREP GROUP	<u>GE</u>	
	<u>SIEMENS FORCE</u>	
	<u>SIEMENS EDGE</u>	

64 SLICE – GE VCT

STEALTH SINUSES

PARAMETER	SCAN	
SCAN TYPE	HELICAL FULL	
ROTATION TIME	0.5 SEC	
THICKNESS	0.625	
PITCH	0.969:1	
SPEED	19.37	
INTERVAL	0.625	
GANTRY TILT		
SCAN FOV	HEAD	
kVp	120	
mA	120	
NOISE INDEX		
DOSE REDUCTION		
ASIR/MODE	0% / PLUS-E	
ALGORITHM	STD	STANDARD
REFORMATS		
THICK/INCR.	Bone THN	0.625 q 0.625
ALGORITHM		BONE
REFORMATS		COR 1 / SAG 1
ASIR/MODE		0% / FULL-E
THICK/INCR.	STD THN	0.625 q 0.625
ALGORITHM		STANDARD
REFORMATS		
ASIR/MODE		0% / PLUS-E

Estimated CTDI	14.01
Estimated DLP	326.04

196(2) – SIEMENS FORCE

STEALTH SINUSES

PARAMETER	SINUSES	
SCAN TYPE		
ROTATION TIME	0.5 SEC	
THICKNESS	0.6mm	
PITCH	0.8	
SPEED		
INTERVAL	0.6mm	
GANTRY TILT		
SCAN FOV		
kVp	CARE kV – SEMI - 120	
mAs	CARE Dose4D	
NOISE INDEX		
DOSE REDUCTION		
DFOV	25	
PREP GROUP		
KERNEL	STD	Hr36
ADMIRE		3
THICK/INCR.	Bone THN	0.6 q 0.6
KERNEL		Hr64
ADMIRE		3
THICK/INCR.	COR 1	1.0 q 1.0
KERNEL		Hr64
ADMIRE		3
THICK/INCR.	SAG 1	1.0 q 1.0
KERNEL		Hr64
ADMIRE		3
THICK/INCR.	STD THN	0.6 q 0.6
KERNEL		Hr36
ADMIRE		3

Estimated CTDI	8.57
Estimated DLP	

SIEMENS EDGE
STEALTH SINUSES

PARAMETER	SINUS	
SCAN TYPE		
ROTATION TIME	1.0 SEC	
THICKNESS	0.6mm	
PITCH	0.8	
SPEED		
INTERVAL	0.6mm	
GANTRY TILT		
SCAN FOV		
kVp	CAREkV – SEMI - 120	
mAs	CAREdose4D	
NOISE INDEX		
DOSE REDUCTION		
DFOV	250mm	
PREP GROUP		
KERNEL	STD	Hr38
ADMIRE	THN	3
THICK/INCR.	Bone THN	0.6 q 0.6
KERNEL		Hr60
ADMIRE		3
THICK/INCR.	COR 2 Bone	2.0 q 2.0
KERNEL		Hr60
ADMIRE		3
THICK/INCR.	SAG 2 Bone	2.0 q 2.0
KERNEL		Hr60
ADMIRE		3
THICK/INCR.	STD	0.6 q 0.6
KERNEL		Hr38
ADMIRE		3

Estimated CTDI	
Estimated DLP	

STEREO HEAD

REVISED: 3/4/22

INDICATION	
ORAL PREP	
SCAN	NON-CONTRAST
RECON	<ul style="list-style-type: none"> • 2.0mm / 2.5mm AXIAL RECONS – STANDARD ALGORITHM
REFORMAT	<ul style="list-style-type: none"> ▪
3D POST PROCESSING	

IV SIZE		
IV CONTRAST		
INJECTION RATE		
PT POSITION		SUPINE / HEAD FIRST / IN STEREOTATIC FRAME
LANDMARK	GE	OMBL
	SIEMENS	BELOW MANDIBLE
BREATHING		
SCOUTS		LATERAL

PARAMETER		GROUP 1	GROUP 2
START		BASE OF SKULL	
END			TOP OF HEAD
DFOV		34.5	34.5
PREP GROUP	GE		
	SIEMENS FORCE		
	SIEMENS EDGE		

64 SLICE – GE VCT

STEREO HEAD

PARAMETER	GROUP 1		GROUP 2	
SCAN TYPE	AXIAL FULL		AXIAL FULL	
ROTATION TIME	1.0 SEC		1.0 SEC	
THICKNESS	2.5		2.5	
PITCH				
SPEED				
INTERVAL	20.0		20.0	
GANTRY TILT				
SCAN FOV	LARGE BODY		LARGE BODY	
kVp	140		120	
mA	320		320	
NOISE INDEX				
DOSE REDUCTION				
ASIR/MODE	0% / FULL		0% / FULL	
ALGORITHM	STD	STANDARD	STD	STANDARD
REFORMATS				

Estimated CTDI	38.44
Estimated DLP	370.79

196(2) – SIEMENS FORCE
STEALTH HEAD

SEE STEALTH HEAD PROTOCOL

STEREO HEAD

T & L-SPINE

REVISED: 3/4/22

INDICATION	TRAUMA
ORAL PREP	
SCAN	NON-CONTRAST
RECON	<ul style="list-style-type: none"> • 1.25mm AXIAL RECONS – DETAIL ALGORITHM • 1.25mm AXIAL RECONS – BONE ALGORITHM • 0.625mm AXIAL RECONS – BONE ALGORITHM (T-SPINE) – NOT SENT TO PACS • 0.625mm AXIAL RECONS – BONE ALGORITHM (L-SPINE) – NOT SENT TO PACS
REFORMAT	<ul style="list-style-type: none"> ▪ 2mm CORONAL AND SAGITTAL (T-SPINE) ▪ 2mm CORONAL AND SAGITTAL (L-SPINE)
3D POST PROCESSING	

IV SIZE		
IV CONTRAST		
INJECTION RATE		
PT POSITION		SUPINE / FEET FIRST
LANDMARK	GE	ILIAC CREST
	SIEMENS	
BREATHING		
SCOUTS		AP AND LATERAL

PARAMETER		SCAN
START		C7
END		S1
DFOV		16
PREP GROUP	<u>GE</u>	
	SIEMENS FORCE	
	<u>SIEMENS EDGE</u>	

64 SLICE – GE VCT

T/L SPINE

PARAMETER	SCAN	
SCAN TYPE	HELICAL FULL	
ROTATION TIME	0.6 SEC	
THICKNESS	1.25	
PITCH	0.984:1	
SPEED	39.37	
INTERVAL	1.25	
GANTRY TILT		
SCAN FOV	LARGE BODY	
kVp	120	
mA	AUTO mA TO 700	
NOISE INDEX	22.43	
DOSE REDUCTION		
ASIR/MODE	0% / PLUS-E	
ALGORITHM	Detail	DETAIL
REFORMATS		
THICK/INCR.	Bone THN TSP	0.625 q 0.625
ALGORITHM		BONE
REFORMATS		COR 2 Bone TSP / SAG 2 Bone TSP
ASIR/MODE		0% / PLUS-E
THICK/INCR.	Bone THN LSP	0.625 q 0.625
ALGORITHM		BONE
REFORMATS		COR 2 Bone LSP / SAG 2 Bone LSP
ASIR/MODE		0% / PLUS-E
THICK/INCR.	Bone	1.25 q 1.25
ALGORITHM		BONE
REFORMATS		
ASIR/MODE		0% / PLUS-E

Estimated CTDI	18.81
Estimated DLP	934.43

T & L-SPINE

SIEMENS EDGE

T/L SPINE

PARAMETER	TL SPINE	
SCAN TYPE		
ROTATION TIME	1.0 SEC	
THICKNESS	2.0mm	
PITCH	0.8	
SPEED		
INTERVAL	2.0mm	
GANTRY TILT		
SCAN FOV		
kVp	CAREKV – ON	
mAs	CAREdose4D	
NOISE INDEX		
DOSE REDUCTION		
DFOV	120mm	
PREP GROUP		
KERNEL	Bone	Br60
ADMIRE		3
THICK/INCR.	STD	2.0 q 2.0
KERNEL		Br36
ADMIRE		3
THICK/INCR.	COR 2 Bone TSP	2.0 q 2.0
KERNEL		Br60
ADMIRE		3
THICK/INCR.	SAG 2 Bone TSP	2.0 q 2.0
KERNEL		Br60
ADMIRE		3
THICK/INCR.	COR 2 Bone LSP	2.0 q 2.0
KERNEL		Br60
ADMIRE		3
THICK/INCR.	SAG 2 Bone LSP	2.0 q 2.0
KERNEL		Br60
ADMIRE		3

Estimated CTDI	
Estimated DLP	

TEMPORAL BONES

REVISED: 3/4/22

INDICATION	HEARING LOSS
ORAL PREP	
SCAN	NON-CONTRAST
RECON	<ul style="list-style-type: none"> • 2.0mm / 2.5mm AXIAL RECONS – STANDARD/DETAIL ALGORITHM • 0.625mm AXIAL RECONS – EDGE ALGORITHM – RT IAC • 0.625mm AXIAL RECONS – EDGE ALGORITHM – LT IAC
REFORMAT	<ul style="list-style-type: none"> ▪ 0.4mm / 0.625mm q 0.3mm CORONAL (EACH IAC) ▪ 0.4mm / 0.625mm q 0.3mm DEHISCENCE REFORMATS (IF REQUESTED)
3D POST PROCESSING	

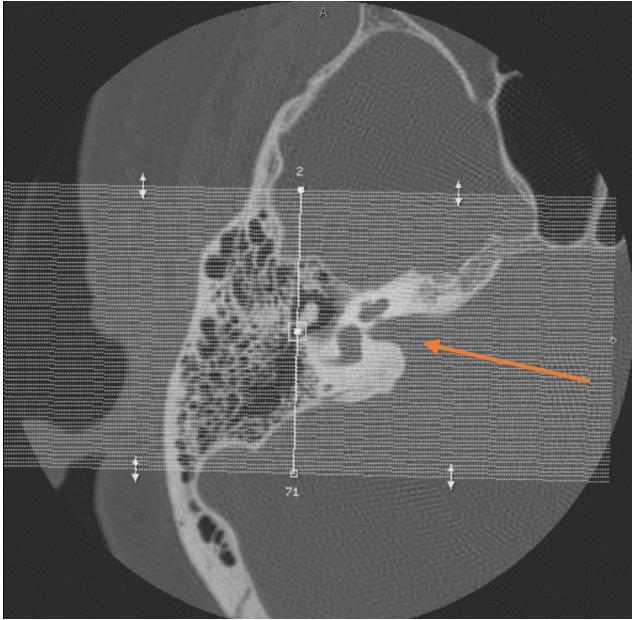
IV SIZE		
IV CONTRAST		
INJECTION RATE		
PT POSITION		SUPINE / HEAD FIRST/ CHIN TUCKED / IOML PERPENDICULAR TO THE FLOOR
LANDMARK	GE	OMBL
	SIEMENS	BELOW MANDIBLE
BREATHING		
SCOUTS		AP AND LATERAL

PARAMETER		SCAN
START		BELOW MASTOID AIR CELLS
END		ABOVE MASTOID AIR CELLS
DFOV		20
PREP GROUP	<u>GE</u>	
	<u>SIEMENS FORCE</u>	
	<u>SIEMENS EDGE</u>	

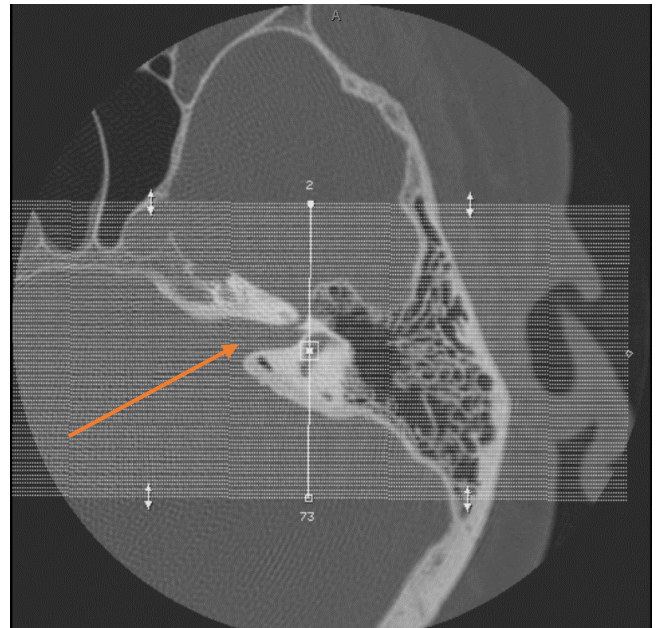


T-BONE REFORMATS:

Right



Left



DEHISCENCE REFORMATS:

RIGHT



LEFT



TEMPORAL BONES

64 SLICE – GE VCT

T-BONES

PARAMETER	SCAN	
SCAN TYPE	HELICAL FULL	
ROTATION TIME	0.8 SEC	
THICKNESS	2.5mm	
PITCH	0.531:1	
SPEED	10.62	
INTERVAL	2.5mm	
GANTRY TILT		
SCAN FOV	HEAD	
kVp	120	
mA	170	
NOISE INDEX		
DOSE REDUCTION		
ASIR/MODE	0% / FULL	
ALGORITHM	Detail	Bone+
REFORMATS		
THICK/INCR.	Edge THN RT	0.625 q 0.3
ALGORITHM		EDGE
REFORMATS		COR RT
ASIR/MODE		0% / FULL
THICK/INCR.	Edge THN LT	0.625 q 0.3
ALGORITHM		EDGE
REFORMATS		COR LT
ASIR/MODE		0% / FULL

Estimated CTDI	22.97
Estimated DLP	143.77

TEMPORAL BONES

196(2) – SIEMENS FORCE

T-BONES

PARAMETER	T-BONES	
SCAN TYPE		
ROTATION TIME	1.0 SEC	
THICKNESS	2.0mm	
PITCH	0.55	
SPEED		
INTERVAL	2.0mm	
GANTRY TILT		
SCAN FOV		
kVp	130	
mAs	CARE Dose4D	
NOISE INDEX		
DOSE REDUCTION		
DFOV	15	
PREP GROUP		
KERNEL	STD	Uh36
ADMIRE		3
THICK/INCR.	EDGE THN RT	0.4 q 0.3
KERNEL		Ur77
ADMIRE		3
THICK/INCR.	EDGE THN LT	0.4 q 0.3
KERNEL		Ur77
ADMIRE		3
THICK/INCR.	COR RT	0.4 q 0.3
KERNEL		Ur77
ADMIRE		3
THICK/INCR.	COR LT	0.4 q 0.3
KERNEL		Ur77
ADMIRE		3

Estimated CTDI	55.87
Estimated DLP	

TEMPORAL BONES

SIEMENS EDGE

T-BONES

PARAMETER	T-BONE	
SCAN TYPE		
ROTATION TIME	1.0 SEC	
THICKNESS	2.0mm	
PITCH	0.55	
SPEED		
INTERVAL	2.0mm	
GANTRY TILT		
SCAN FOV		
kVp	120	
mAs	300	
NOISE INDEX		
DOSE REDUCTION		
DFOV	200mm	
PREP GROUP		
KERNEL	STD	Ur38
ADMIRE	THN	3
THICK/INCR.	Edge	0.5 q 0.4
KERNEL	THN	Ur38
ADMIRE	RT	3
THICK/INCR.	Edge	0.5 q 0.4
KERNEL	THN	Ur38
ADMIRE	LT	3
THICK/INCR.	COR	0.6 q 0.5
KERNEL	RT	Ur68
ADMIRE	RT	3
THICK/INCR.	COR	0.6 q 0.5
KERNEL	LT	Ur68
ADMIRE	LT	3

Estimated CTDI	
Estimated DLP	

TEMPORAL BONES

T-SPINE

REVISED: 3/4/22

INDICATION	BACK PAIN
ORAL PREP	
SCAN	NON-CONTRAST
RECON	<ul style="list-style-type: none"> • 1.25mm / 2.0mm AXIAL RECONS – DETAIL / STANDARD ALGORITHM • 1.25mm / 2.0mm AXIAL RECONS – BONE ALGORITHM • 0.625mm AXIAL RECONS – BONE ALGORITHM – NOT SENT TO PACS (GE SCANNERS)
REFORMAT	<ul style="list-style-type: none"> ▪ 2mm CORONAL AND SAGITTAL
3D POST PROCESSING	

IV SIZE		
IV CONTRAST		
INJECTION RATE		
PT POSITION		SUPINE / FEET FIRST
LANDMARK	GE	ILIAC CREST
	SIEMENS	ABOVE SHOULDERS
BREATHING		
SCOUTS		AP AND LATERAL

PARAMETER		SCAN
START		C7
END		T1
DFOV		16
PREP GROUP	<u>GE</u>	
	<u>SIEMENS FORCE</u>	
	<u>SIEMENS EDGE</u>	

T-SPINE

64 SLICE – GE VCT

T-SPINE

PARAMETER	SCAN	
SCAN TYPE	HELICAL FULL	
ROTATION TIME	0.6 SEC	
THICKNESS	1.25	
PITCH	0.984:1	
SPEED	39.37	
INTERVAL	1.25	
GANTRY TILT		
SCAN FOV	LARGE BODY	
kVp	120	
mA	AUTO mA TO 700	
NOISE INDEX	22.43	
DOSE REDUCTION		
ASIR/MODE	0% / PLUS-E	
ALGORITHM	Detail	DETAIL
REFORMATS		
THICK/INCR.	Bone THN	0.625 q 0.625
ALGORITHM		BONE
REFORMATS		COR 2 Bone / SAG 2 Bone
ASIR/MODE		0% / PLUS-E
THICK/INCR.	Bone	1.25 q 1.25
ALGORITHM		BONE
REFORMATS		
ASIR/MODE		0% / PLUS-E

Estimated CTDI	18.81
Estimated DLP	934.43

T-SPINE

196(2) – SIEMENS FORCE

T-SPINE

PARAMETER	T-SPINE	
SCAN TYPE		
ROTATION TIME	1.0 SEC	
THICKNESS	2.0mm	
PITCH	0.8	
SPEED		
INTERVAL	2.0mm	
GANTRY TILT		
SCAN FOV		
kVp	CARE kV – ON	
mAs	CARE Dose4D	
NOISE INDEX		
DOSE REDUCTION		
DFOV	12	
PREP GROUP		
KERNEL	Bone	Br64
ADMIRE		3
THICK/INCR.	STD	2.0 q 2.0
KERNEL		Br64
ADMIRE		3
THICK/INCR.	COR 2 Bone	2.0 q 2.0
KERNEL		Br64
ADMIRE		3
THICK/INCR.	SAG 2 Bone	2.0 q 2.0
KERNEL		Br64
ADMIRE		3
THICK/INCR.	Curved AX Bone	2.0 q 2.0
KERNEL		Br64
ADMIRE		3

Estimated CTDI	15.85
Estimated DLP	

T-SPINE

SIEMENS EDGE

T-SPINE

PARAMETER	T-SPINE	
SCAN TYPE		
ROTATION TIME	1.0 SEC	
THICKNESS	2.0mm	
PITCH	0.8	
SPEED		
INTERVAL	2.0mm	
GANTRY TILT		
SCAN FOV		
kVp	CAREkV – ON	
mAs	CAREdDose4D	
NOISE INDEX		
DOSE REDUCTION		
DFOV	120mm	
PREP GROUP		
KERNEL	Bone	Br60
ADMIRE		3
THICK/INCR.	STD	2.0 q 2.0
KERNEL		Br36
ADMIRE		3
THICK/INCR.		2.0 q 2.0
KERNEL	COR 2 Bone	Br60
ADMIRE		3
THICK/INCR.	SAG 2 Bone	2.0 q 2.0
KERNEL		Br60
ADMIRE		3

Estimated CTDI	
Estimated DLP	