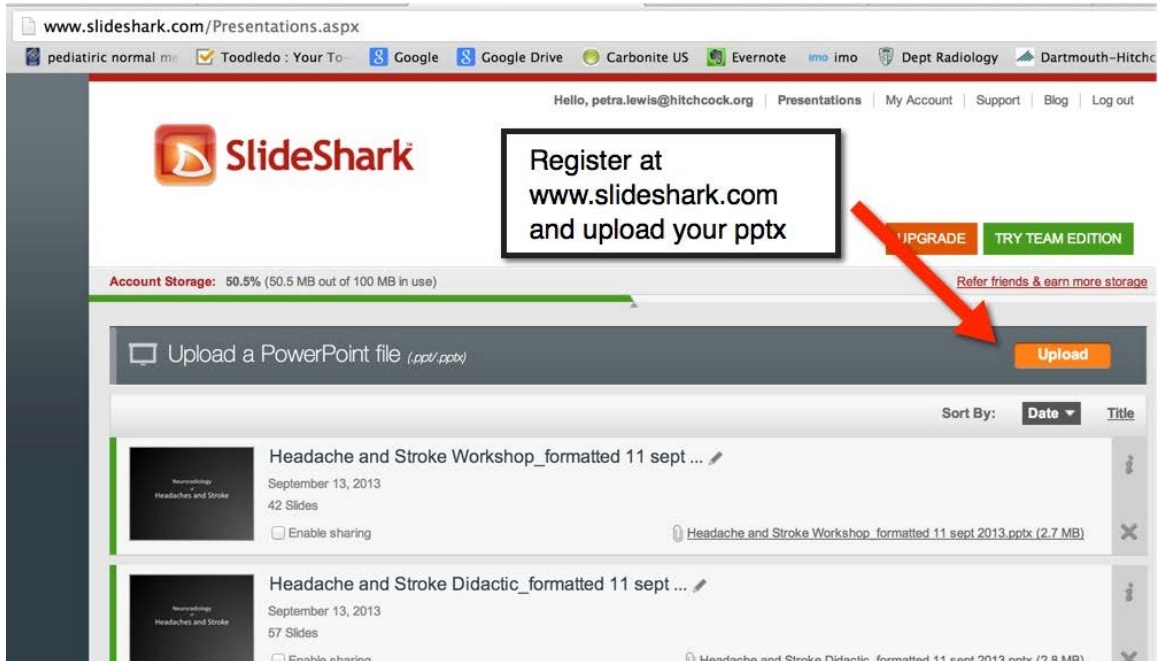
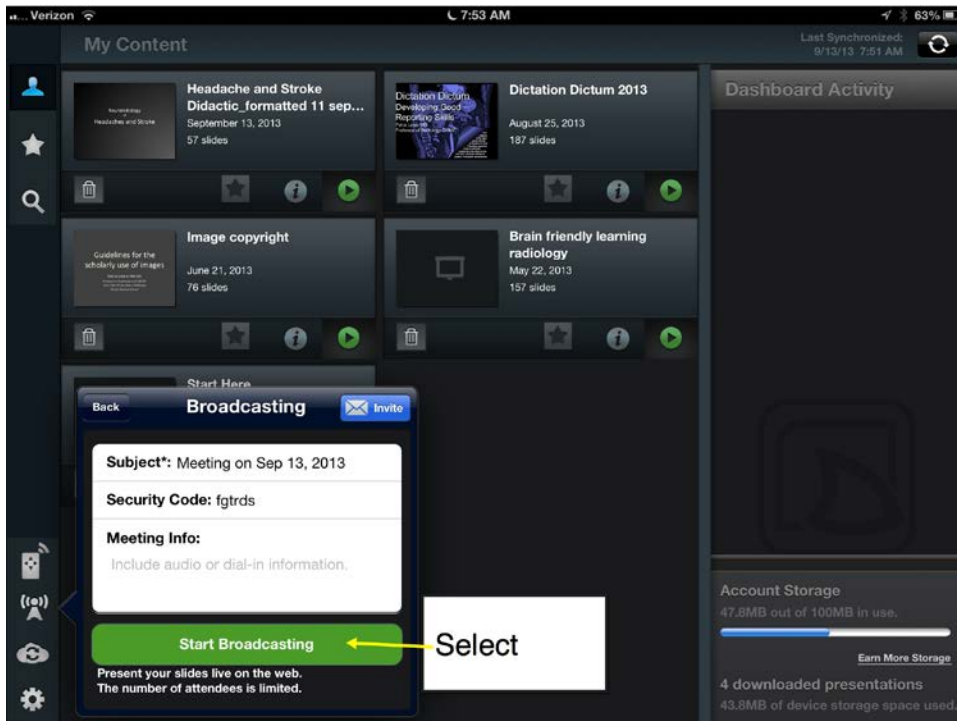


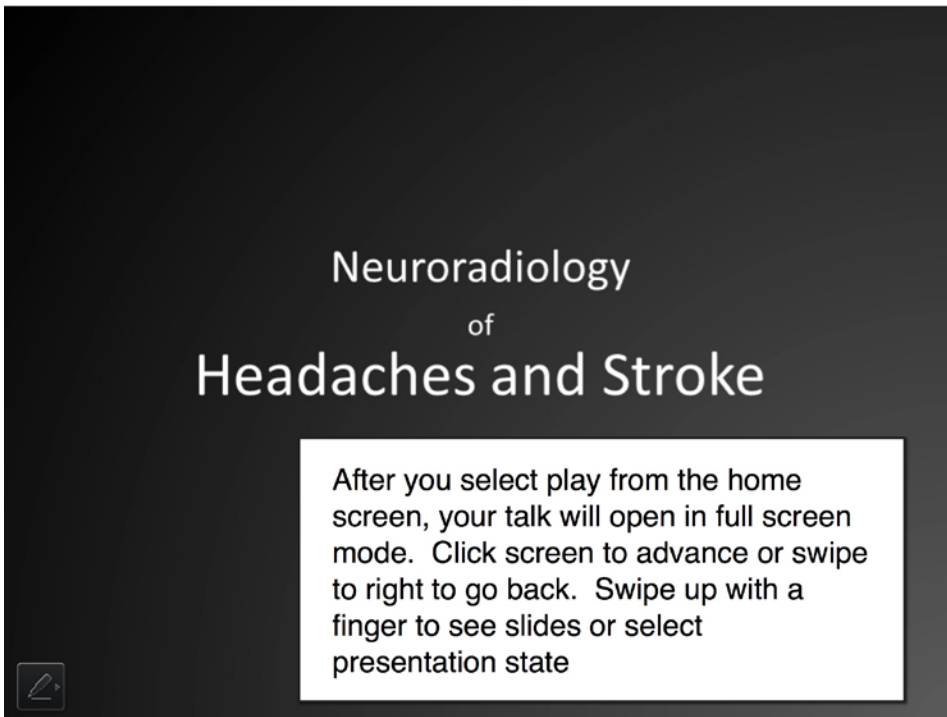
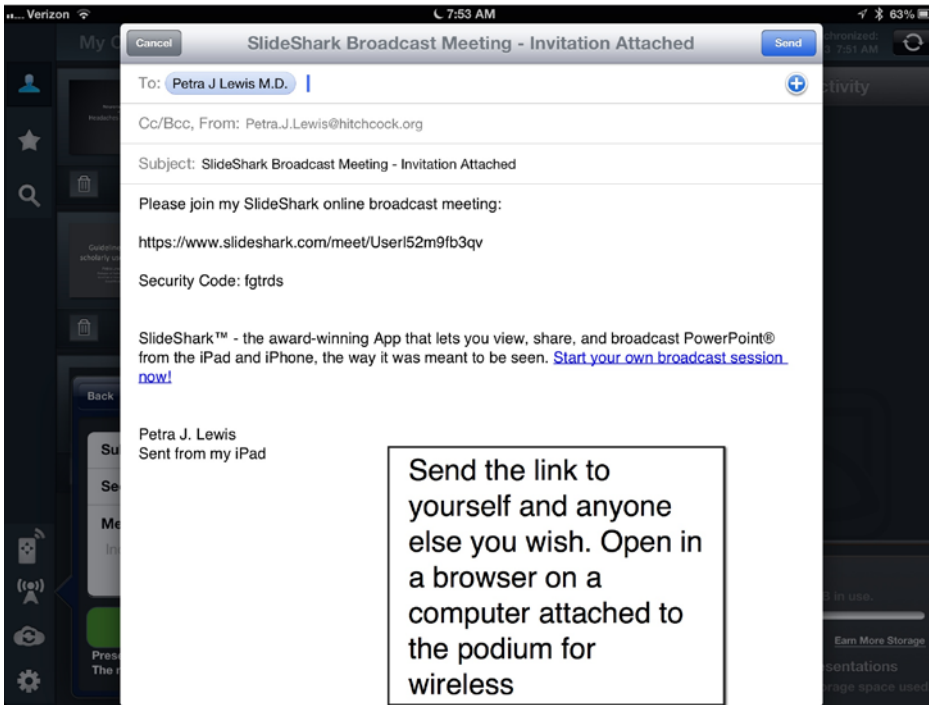
Slide Shark basic instructions

On computer:



On Ipad:





Neuroradiology of Headaches and Stroke

Select pen for annotation
and then select color and
width if you wish. Click
pen again to exit
annotation or clear to
remove all annotations

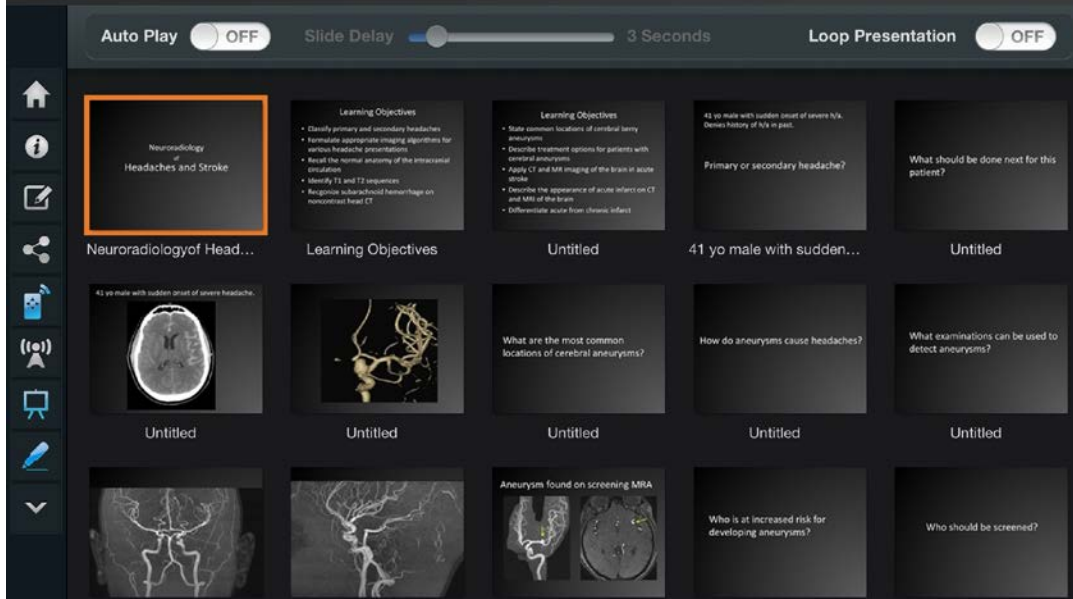


Neuroradiology of Headaches and Stroke

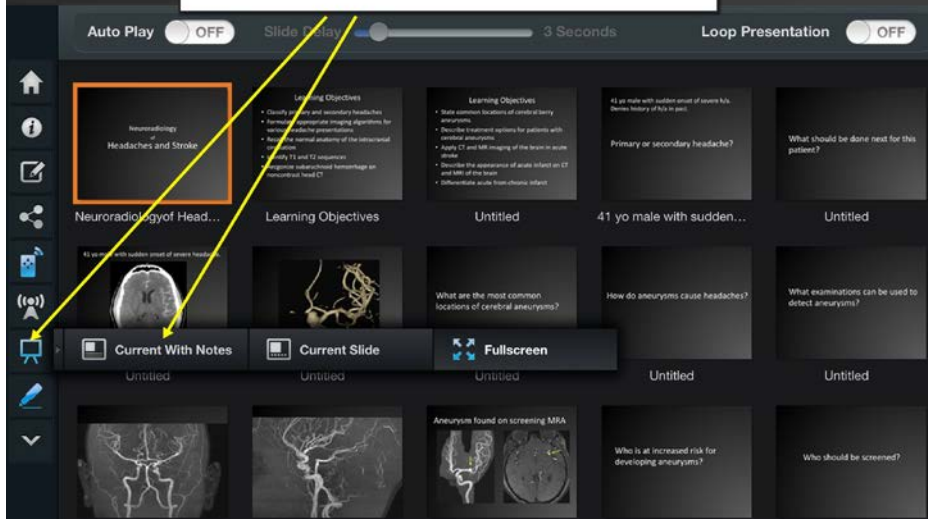
Changing color of
annotations



If you swipe up you see this. Select any slide to jump ahead. Auto slide shows use top bar.



Select display to show slides with lecture notes. Audience will only see slide



The screenshot shows a mobile application interface for a presentation. At the top, the status bar displays 'Verizon', '8:00 AM', and '62%' battery. The main content area is split into two sections. The top section is a dark-themed slide with the text 'What should be done next for this patient?'. To the right of this slide are two timer displays: 'Overall Elapsed Time: 00:00:00' and 'Current Slide Elapsed Time: 00:00:00', with 'Start Timers' and 'Reset' buttons. Below the timers is a slide selector showing three thumbnails: '41 yo male with sudden...', 'Untitled', and 'Untitled' (with a brain CT scan image). A white box labeled 'Timer for your presentation' points to the timer area. A red arrow points from the 'Lecture note display' box to an annotation icon on the slide. The bottom section is a light-colored note area containing the text: 'Q: What should be done next for this patient? A: Noncontrast head CT. You must exclude SAH in this patient and CT is considered superior for detection of SAH. Noncontrast head CT is test of choice for patients who: 1. present with "worst headache of life." 2. Present with sudden severe "thunderclap" headache. 3. exclude herniation prior to LP 4. evaluate for hydrocephalus.' A white box labeled 'Lecture note display. Notice that you can still annotate if you wish' points to the note area. Another white box labeled 'Slide selector' points to the slide thumbnails.

Petra Lewis 9/13/13